

**HIDROGAS**

**2**

Cromoterapia per Box Doccia e Vasca  
Cromatherapy for Shower and Bathtub

---

**3**

Niagara Waterfall  
Lettore Mp3 Usb

---

**4**

Componenti Box Doccia  
Shower Cabin Components

---

**15**

Componenti Idromassaggio ad Aria  
Components for Air Pools

---

**20**

Jet

---

**44**

Elettropompe  
Electropumps

---

**47**

Kit

---

# CROMOTERAPIA PER BOX DOCCIA E VASCA

## CROMATHERAPY FOR SHOWER AND BATHTUB

Il termine "cromoterapia" deriva dal greco e significa "cura con il colore". I singoli colori hanno delle proprietà terapeutiche ad essi associate. Il kit è composto da una tastiera, una centralina di controllo e da 1 fino a 4 fari RGB massimo, da 3Watt l'uno, che producono 12 colori. I fari sono disponibili in due diversi diametri con due diversi design di placca. Funzioni: on/off, cambio colore manuale e cambio colore automatico.

"Cromatherapy" is a greek word that means "therapy with colours". Each colour is associated with therapeutic properties. The kit consists of a keyboard, a controlbox and from 1 to maximum 4 RGB spotlights, 3 Watt each, that produce 12 colours. The spotlights are available in two different diameters and two different finishings. Functions: on/off, manual and automatic change of colours.



Kit 2 fari/spotlight Ø 79  
Kit 3 fari/spotlight Ø 79  
Kit 4 fari/spotlight Ø 79

bianco/white  
bianco/white  
bianco/white

code:H208.P2B  
code:H208.P3B  
code:H208.P4B

Kit 2 fari/spotlight Ø 79  
Kit 3 fari/spotlight Ø 79  
Kit 4 fari/spotlight Ø 79

cromo/chrome  
cromo/chrome  
cromo/chrome

code:H208.P2C  
code:H208.P3C  
code:H208.P4C

Kit 2 fari/spotlight Ø 98  
Kit 3 fari/spotlight Ø 98  
Kit 4 fari/spotlight Ø 98

bianco/white  
bianco/white  
bianco/white

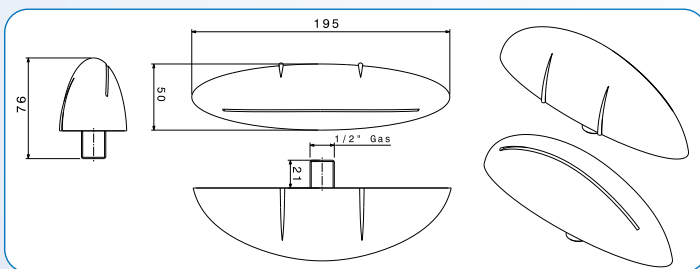
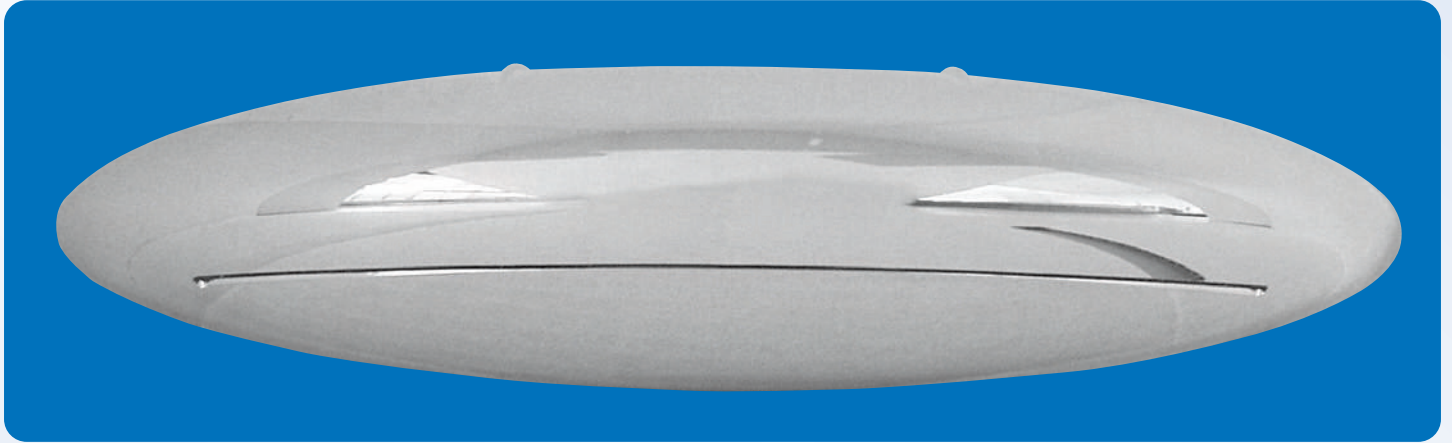
code:H207.G2B  
code:H207.G3B  
code:H207.G4B

Kit 2 fari/spotlight Ø 98  
Kit 3 fari/spotlight Ø 98  
Kit 4 fari/spotlight Ø 98

cromo/chrome  
cromo/chrome  
cromo/chrome

code:H207.G2C  
code:H207.G3C  
code:H207.G4C

# NIAGARA WATERFALL



Cascata per box doccia o vasca.  
"Waterfall" for shower tup cabin or bathtub.  
**code: H206.C**

# LETTORE MP3 USB



Il lettore MP3 legge le normali chiavette di memoria USB con file MP3 anche se all'interno ci sono file di diverso formato. Viene assemblato su frutto scatola 503B o 503V. Si comanda direttamente con 4 pulsanti REW, PLAY/PAUSE, STOP e FWD, più la regolazione del volume tramite altri 2 tasti. Alimentazione 8,5 ~ 14 Vcc (VDC), corrente assorbita 2A max per versione amplificata o 160mA per versione preamplificata.

MP3 player reads USB keys with MP3 files, even if it contains different kinds of files. It is fixed into a socket model 503B or 503V. It is controlled directly by 4 buttons REW, PLAY/PAUSE, STOP and FWS, plus the volume regulation with other two. Power supply 8,5 ~ 14Vcc (VDC), 2A max current consumption for amplified version or 160 mA for preamplified version.

**code: mp3.it**

# COMPONENTI BOX DOCCIA

## SHOWER CABIN COMPONENTS

### BOCCHETTE CON ATTACCO PORTAGOMMA - JET WITH HOSE SUPPORT

#### ANTICAL

Bocchetta "ANTICAL" con sistema anticalcare in gomma siliconica.  
Jet "ANTICAL" with anti-limestone system made of silicon-rubber.



##### PLACCA - SFERA

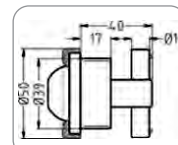
bianco-bianco  
cromo-bianco

##### COVER - EYE BALL

white-white  
chrome-white

code: H328.B/VE

code: H328.C/VE



##### PLACCA - SFERA

bianco-bianco  
cromo-bianco

##### COVER - EYE BALL

white-white  
chrome-white

code: H329.B/VE

code: H329.C/VE

#### MINIBOX

Bocchetta MINIBOX completa di ghiera di fissaggio a parete, disponibile in varie finiture  
Jet MINIBOX complete of wall fixing nut, available in different finishings.



##### PLACCA - SFERA

bianco-bianco  
cromo-bianco  
dorato-bianco  
satinato-bianco  
cromo-cromo

##### COVER - EYE BALL

white-white  
chrome-white  
gold-white  
satin-white  
chrome-chrome

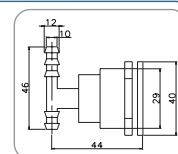
code: HMB308.B

code: HMB308.C

code: HMB308.D

code: HMB308.CS

code: HMB308.CC



##### PLACCA - SFERA

bianco-bianco  
cromo-bianco  
dorato-bianco  
satinato-bianco  
cromo-cromo

##### COVER - EYE BALL

white-white  
chrome-white  
gold-white  
satin-white  
chrome-chrome

code: HMB308.FB

code: HMB308.FC

code: HMB308.FD

code: HMB308.FCS

code: HMB308.FCC

## JOLLY BOX Bocchetta JOLLY BOX autopulente. Fissaggio tubi con fascette, completa di ghiera di fissaggio a parete. Disponibile in varie finiture. Jet JOLLY BOX self cleaning. Fixing hose with clamps, complete with wall fixing. Available in different finishings.



### PLACCA - SFERA

bianco-bianco  
cromo-bianco  
cromo-cromo  
dorato-bianco  
dorato-dorato  
satinato-bianco

### COVER - EYE BALL

white-white  
chrome-white  
chrome-chrome  
gold-white  
gold-gold  
satin-white

code: H325.B/VE  
code: H325.C/VE  
code: H325.CC/VE  
code: H325.D/VE  
code: H325.DD/VE  
code: H325.CS/VE



### PLACCA - SFERA

bianco-bianco  
cromo-bianco  
cromo-cromo  
dorato-bianco  
dorato-dorato  
satinato-bianco

### COVER - EYE BALL

white-white  
chrome-white  
chrome-chrome  
gold-white  
gold-gold  
satin-white

code: H325.B/TV  
code: H325.C/TV  
code: H325.CC/TV  
code: H325.D/TV  
code: H325.DD/TV  
code: H325.CS/TV



### PLACCA - SFERA

bianco-bianco  
cromo-bianco  
cromo-cromo  
dorato-bianco  
dorato-dorato  
satinato-bianco

### COVER - EYE BALL

white-white  
chrome-white  
chrome-chrome  
gold-white  
gold-gold  
satin-white

code: H326.B/VE  
code: H326.C/VE  
code: H326.CC/VE  
code: H326.D/VE  
code: H326.DD/VE  
code: H326.CS/VE



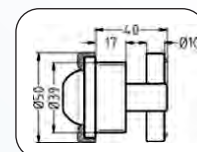
### PLACCA - SFERA

bianco-bianco  
cromo-bianco  
cromo-cromo  
dorato-bianco  
dorato-dorato  
satinato-bianco

### COVER - EYE BALL

white-white  
chrome-white  
chrome-chrome  
gold-white  
gold-gold  
satin-white

code: H326.B/TV  
code: H326.C/TV  
code: H326.CC/TV  
code: H326.D/TV  
code: H326.DD/TV  
code: H326.CS/TV



# BOCCHETTE CON ATTACCO PORTAGOMMA - JET WITH HOSE SUPPORT

**PULSAR** Bocchetta PULSAR a getto pulsato. Fissaggio tubi con fascette, completa di ghiera di fissaggio a parete. Disponibile in varie finiture.  
 Jet PULSAR with pulsating waterjet, hose fixed with clamps, complete of wall fixing. Available in different finishings.



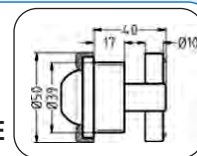
## PLACCA - SFERA

bianco-bianco  
 cromo-bianco  
 cromo-cromo  
 dorato-bianco  
 dorato-dorato  
 satinato-bianco

## COVER - EYE BALL

white-white  
 chrome-white  
 chrome-chrome  
 gold-white  
 gold-gold  
 satin-white

code: H335.B/VE  
 code: H335.C/VE  
 code: H335.CC/VE  
 code: H335.D/VE  
 code: H335.DD/VE  
 code: H335.CS/VE



## PLACCA - SFERA

bianco-bianco  
 cromo-bianco  
 cromo-cromo  
 dorato-bianco  
 dorato-dorato  
 satinato-bianco

## COVER - EYE BALL

white-white  
 chrome-white  
 chrome-chrome  
 gold-white  
 gold-gold  
 satin-white

code: H335.B/TV  
 code: H335.C/TV  
 code: H335.CC/TV  
 code: H335.D/TV  
 code: H335.DD/TV  
 code: H335.CS/TV



## PLACCA - SFERA

bianco-bianco  
 cromo-bianco  
 cromo-cromo  
 dorato-bianco  
 dorato-dorato  
 satinato-bianco

## COVER - EYE BALL

white-white  
 chrome-white  
 chrome-chrome  
 gold-white  
 gold-gold  
 satin-white

code: H336.B/VE  
 code: H336.C/VE  
 code: H336.CC/VE  
 code: H336.D/VE  
 code: H336.DD/VE  
 code: H336.CS/VE



## PLACCA - SFERA

bianco-bianco  
 cromo-bianco  
 cromo-cromo  
 dorato-bianco  
 dorato-dorato  
 satinato-bianco

## COVER - EYE BALL

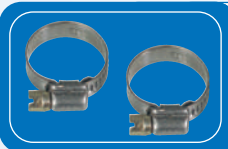
white-white  
 chrome-white  
 chrome-chrome  
 gold-white  
 gold-gold  
 satin-white

code: H336.B/TV  
 code: H336.C/TV  
 code: H336.CC/TV  
 code: H336.D/TV  
 code: H336.DD/TV  
 code: H336.CS/TV

## ACCESSORI CONSIGLIATI



Tubo retinato ø 10 x 16 in rotoli da 50m.  
 Reinforced hose ø 10 x 16 available in rolls of 50m.  
**code: 0066**



Fascette stringitubo in acciaio inox 10 x 16 mm.  
 Stainless steel hose clamps 10 x 16 mm.  
**code: 0065**



Fascette stringitubo in plastica 15 - 17,1 mm.  
 Plastic clips hose clamps 15 - 17,1 mm.  
**code: HCL-F**



Guarnizione per ghiera di fissaggio a parete, per bocchette Jolly Box, Pulsar e Antical  
 O-ring for wall fixing, for Jet type Jolly Box, Pulsar and Antical  
**code: 11.80**

## ANTICAL

Bocchetta "ANTICAL" con sistema anticalcare in gomma siliconica.  
Jet "ANTICAL" with anti-limestone system made of silicon-rubber.



### PLACCA - SFERA

bianco-bianco  
cromo-bianco

### COVER - EYE BALL

white-white  
chrome-white

code: H331.B/VE

code: H331.C/VE



### PLACCA - SFERA

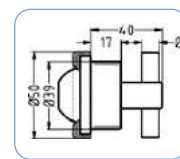
bianco-bianco  
cromo-bianco

### COVER - EYE BALL

white-white  
chrome-white

code: H332.B/VE

code: H332.C/VE



## MINIBOX

Bocchetta MINIBOX completa di ghiera di fissaggio a parete, disponibile in varie finiture  
Jet MINIBOX complete of wall fixing nut, available in different finishings.



### PLACCA - SFERA

bianco-bianco  
cromo-bianco  
dorato-bianco  
satinato-bianco  
cromo-cromo

### COVER - EYE BALL

white-white  
chrome-white  
gold-white  
satin-white  
chrome-chrome

code: HMB309.B

code: HMB309.C

code: HMB309.D

code: HMB309.CS

code: HMB309.CC



### PLACCA - SFERA

bianco-bianco  
cromo-bianco  
dorato-bianco  
satinato-bianco  
cromo-cromo

### COVER - EYE BALL

white-white  
chrome-white  
gold-white  
satin-white  
chrome-chrome

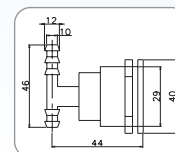
code: HMB309.FB

code: HMB309.FC

code: HMB309.FD

code: HMB309.FCS

code: HMB309.FCC





## JOLLY BOX Bocchetta JOLLY BOX autopulente con attacco rapido, completa di ghiera di fissaggio a parete. Disponibile in varie finiture Jet JOLLY BOX self cleaning with quick fitting, complete of wall fixing. Available in different finishings.



### PLACCA - SFERA

bianco-bianco  
cromo-bianco  
cromo-cromo  
dorato-bianco  
dorato-dorato  
satinato-bianco

### COVER - EYE BALL

white-white  
chrome-white  
chrome-chrome  
gold-white  
gold-gold  
satin-white

code: H320.B/VE  
code: H320.C/VE  
code: H320.CC/VE  
code: H320.D/VE  
code: H320.DD/VE  
code: H320.CS/VE



### PLACCA - SFERA

bianco-bianco  
cromo-bianco  
cromo-cromo  
dorato-bianco  
dorato-dorato  
satinato-bianco

### COVER - EYE BALL

white-white  
chrome-white  
chrome-chrome  
gold-white  
gold-gold  
satin-white

code: H320.B/TV  
code: H320.C/TV  
code: H320.CC/TV  
code: H320.D/TV  
code: H320.DD/TV  
code: H320.CS/TV



### PLACCA - SFERA

bianco-bianco  
cromo-bianco  
cromo-cromo  
dorato-bianco  
dorato-dorato  
satinato-bianco

### COVER - EYE BALL

white-white  
chrome-white  
chrome-chrome  
gold-white  
gold-gold  
satin-white

code: H327.B/VE  
code: H327.C/VE  
code: H327.CC/VE  
code: H327.D/VE  
code: H327.DD/VE  
code: H327.CS/VE



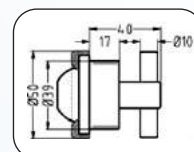
### PLACCA - SFERA

bianco-bianco  
cromo-bianco  
cromo-cromo  
dorato-bianco  
dorato-dorato  
satinato-bianco

### COVER - EYE BALL

white-white  
chrome-white  
chrome-chrome  
gold-white  
gold-gold  
satin-white

code: H327.B/TV  
code: H327.C/TV  
code: H327.CC/TV  
code: H327.D/TV  
code: H327.DD/TV  
code: H327.CS/TV



# BOCCHETTE CON ATTACCO RAPIDO - JET WITH QUICK FITTING

**PULSAR** Bocchetta PULSAR a getto pulsato con attacco rapido per fissaggio tubi, completa di ghiera di fissaggio a parete. Disponibile in varie finiture.  
 Jet PULSAR with pulsating waterjet with quick fitting, complete of wall fixing. Available in different finishings.



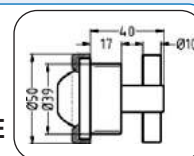
## PLACCA - SFERA

bianco-bianco  
 cromo-bianco  
 cromo-cromo  
 dorato-bianco  
 dorato-dorato  
 satinato-bianco

## COVER - EYE BALL

white-white  
 chrome-white  
 chrome-chrome  
 gold-white  
 gold-gold  
 satin-white

code: H330.B/VE  
 code: H330.C/VE  
 code: H330.CC/VE  
 code: H330.D/VE  
 code: H330.DD/VE  
 code: H330.CS/VE



## PLACCA - SFERA

bianco-bianco  
 cromo-bianco  
 cromo-cromo  
 dorato-bianco  
 dorato-dorato  
 satinato-bianco

## COVER - EYE BALL

white-white  
 chrome-white  
 chrome-chrome  
 gold-white  
 gold-gold  
 satin-white

code: H330.B/TV  
 code: H330.C/TV  
 code: H330.CC/TV  
 code: H330.D/TV  
 code: H330.DD/TV  
 code: H330.CS/TV



## PLACCA - SFERA

bianco-bianco  
 cromo-bianco  
 cromo-cromo  
 dorato-bianco  
 dorato-dorato  
 satinato-bianco

## COVER - EYE BALL

white-white  
 chrome-white  
 chrome-chrome  
 gold-white  
 gold-gold  
 satin-white

code: H337.B/VE  
 code: H337.C/VE  
 code: H337.CC/VE  
 code: H337.D/VE  
 code: H337.DD/VE  
 code: H337.CS/VE



## PLACCA - SFERA

bianco-bianco  
 cromo-bianco  
 cromo-cromo  
 dorato-bianco  
 dorato-dorato  
 satinato-bianco

## COVER - EYE BALL

white-white  
 chrome-white  
 chrome-chrome  
 gold-white  
 gold-gold  
 satin-white

code: H337.B/TV  
 code: H337.C/TV  
 code: H337.CC/TV  
 code: H337.D/TV  
 code: H337.DD/TV  
 code: H327.CS/VE

## ACCESSORI CONSIGLIATI



Tubo semirigido 8 x 10 in rotoli da 100m.  
 Semirigid hose 8 x 10 available in rolls of 100m.  
**code: 0033.810**



Raccordo rapido a ' T ' Ø10  
 ' T ' push on connector Ø10  
**code: 0060**



Raccordo rapido gomito Ø10  
 Elbow shaped push on connector Ø10  
**code: 0061**



Raccordo rapido diritto Ø10  
 Straight push on connector Ø10  
**code: 0062**



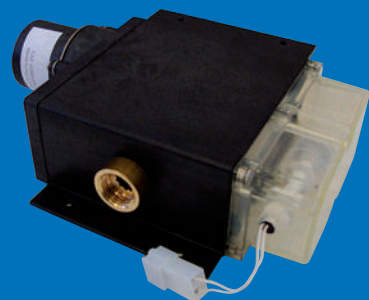
Guarnizione per ghiera di fissaggio a parete, per bocchette Jolly Box, Pulsar e Antical  
 O-ring for wall fixing, for Jet type Jolly Box, Pulsar and Antical  
**code: 11.80**

## KIT VAPORE - STEAM KIT

Sistema bagno turco completo di centralina, generatore di vapore e tastiera.  
Turkish Bath system, complete with control box, steam generator and keyboard.



2000 Watt	code: DGV200
2500 Watt	code: DGV250
3000 Watt	code: DGV300
3500 Watt	code: DGV350



## KIT VAPORE PLUS - STEAM PLUS KIT

Sistema multifunzione con la possibilità di comandare il bagno turco alimentato da un generatore di vapore, la cromoterapia con un faro RGB, radio FM e ingresso ausiliario per lettori MP3 o CD.

Multifunction system with the possibility to control turkish bath with steam generator, cromatherapy with a RGB spotlight, radio FM and auxiliary audio input for MP3 or CD player.



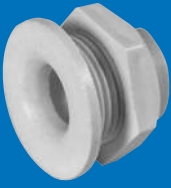
2000Watt
2500Watt
3000Watt
3500Watt

code: PLUS200
code: PLUS250
code: PLUS300
code: PLUS350



2000Watt
2500Watt
3000Watt
3500Watt

code: PLUS200.C
code: PLUS250.C
code: PLUS300.C
code: PLUS350.C



Bocchetta MINIVAPOR per sistemi di bagno turco in materiale plastico resistente al calore del vapore acqueo. Date le dimensioni ridotte è particolarmente adatta ad impianti con mandate di vapore multiple.

*MINIVAPOR steam jet for special steam systems, made out of special plastic material resistant to high steam temperatures. Thanks to its dimensions it is especially suitable for steam systems with double or more steam outlets.*

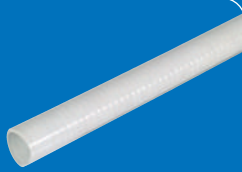
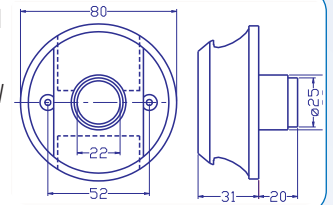
**code: VAP309.M**



Bocchetta AROMAVAPOR per sistemi bagnoturco, costruita in materiale plastico resistente al calore del vapore acqueo, con possibilità di impiego di sali o essenze aromatizzanti.

*AROMAVAPOR steam jet for top class steam system, made out of special plastic material resistant to high steam temperatures, offering the possibility to add aromatized salts or essences.*

**code: HVAP.308.B**



Tubo Vapore  $\varnothing$  20 x 25  
Steam Hose  $\varnothing$  20 x 25

**code: VAP.T**

## LAMPADE - BOX LAMPS

Lampade a tenuta per box doccia, con finitura placca bianca o inox lucido, complete di lampadina alogena da 20 Watt, 12V.  
Water tight lamps for shower cabin, available in white or polished stainless steel finishings, includes alogenous 20 Watt lightbulb.



Ø94 bianco	white	<b>code: 0037.B</b>
Ø94 inox lucido	polished stainless steel	<b>code: 0037.C</b>
Ø150 bianco	white	<b>code: 0034.B</b>
Ø150 inox lucido	polished stainless steel	<b>code: 0034.C</b>
Ø180 bianco	white	<b>code: 0035.B</b>
Ø180 inox lucido	polished stainless steel	<b>code: 0035.C</b>



Ø150x96 bianco	white	<b>code: 0036.B</b>
Ø150x96 inox lucido	polished stainless steel	<b>code: 0036.C</b>

## TRASFORMATORE - TRANSFORMER (230 V/12 Vac • max.40 Watt)



inserito in scatola stagna.  
*inside a water tight box.*

**code: TRA12.IP**

inserito in scatola stagna con interruttore pneumatico.  
*inside a water tight box with air switch.*

**code: TRA12.AS**



## Miscelatori a 1 via • 1 way mixers

bianco  
cromo  
dorato

white  
chrome  
gold

code: 0071.B  
code: 0071.C  
code: 0071.D



## Miscelatori a 2 vie • 2 ways mixers

bianco  
cromo  
dorato

white  
chrome  
gold

code: 0070.B  
code: 0070.C  
code: 0070.D



## Piastra per miscelatori a 2 vie • Coverplate for 2 ways mixers

bianco  
cromo  
dorato

white  
chrome  
gold

code: 0072.B  
code: 0072.C  
code: 0072.D



## Miscelatore termostatico incasso G 1/2" a chiusura. Built-in thermostatic mixer, G1/2" with shut off position.

2 vie/ways  
3 vie/ways  
4 vie/ways

code: 6712  
code: 6714  
code: 6716



## Miscelatore incasso doccia con deviatore. Built-in shower mixer with diverter.

3 vie/ways  
4 vie/ways

code: 6704  
code: 6706



## Piastra in ottone per miscelatori a 3 e 4 vie. Brass coverplate for 3 and 4 ways mixers.

code: 0067.C



Doccia " STICK "  
con ugelli anticalcare  
Hand shower " STICK "  
with anti-limestone jets  
**code: 321**



Doccia " SQUARE "  
con ugelli anticalcare  
Hand shower " SQUARE "  
with anti-limestone jets  
**code: 322**



Pres a acqua ad angolo  
1/2" x1/2"  
Water outlet 1/2"x1/2"  
**code: 4120**



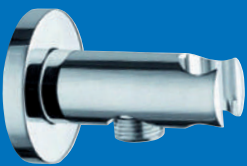
Pres a acqua ad angolo 1/2"  
x1/2"  
Water outlet 1/2"x1/2"  
**code: 4123**



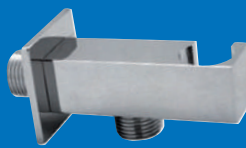
Supporto doccia.  
Shower support.  
**code: 4127**



Supporto doccia.  
Shower support.  
**code: 4128**



Supporto doccia  
con presa acqua.  
Shower support  
with water outlet.  
**code: 4133**



Supporto doccia con presa  
acqua.  
Shower support with water  
outlet.  
**code: 4134**



Asta saliscendi cm 60 e  
portasapone  
Shower sliding pole cm  
60 and soap-dish.  
**code: 4159**



Flessibile inox cromato  
doppia aggraffatura con  
cono da 1/2\".  
Double seam chromed  
stainless steel with cone 1/2\".  
**code: 295**

## SOFFIONI - HEAD SHOWERS



Soffione doccia " SATURNO " in ottone, Ø 200mm  
Brass head shower " SATURNO " Ø 200mm  
**code: 6640**



Soffione " VENERE " in ottone Ø 22cm con ugelli anticalcare.  
Brass shower head " VENERE " Ø 22 cm with anti-limestone jets.  
**code: 6632**



Soffione " MARTE " in ottone cm22 x 22, con ugelli anticalcare.  
Brass shower head " MARTE " cm22 x 22, with anti-limestone jets.  
**code: 6633**



Soffione " GIOVE " in abs cm20 x 20.  
Abs shower head " GIOVE " cm20 x 20.  
**code: 6652**



**code: 2011**  
Soffione "Sole" con cromoterapia a leds RGB e ugelli anticalcare.  
Shower head "Sole" with cromatherapy and anti-limestone jets.



**code: 2015**  
Kit completo con Soffione "Sole", centralina e tastiera.  
Complete kit with showerhead "Sole", control box and keyboard.



Braccio diritto lungo mm 300  
Straight shower arm, length mm 300  
**code: 6600**

## SEDILE - SEAT



Sedile "CORTESIA" pieghevole, completo di staffa per fissaggio a muro in alluminio. Larghezza 40cm, altezza 47cm, profondità 33,7cm, punti di fissaggio n° 4 (filetto M7).

*Flexible shower seat " CORTESIA ", complete with aluminum bracket for wall. Width 40cm, height 47cm, depth 33,7 cm, n°4 fixing points ( thread M7).*

**code: 2013.B**

# Componenti idromassaggio ad aria

## Components for airpools

Gamma di soffianti per vasche di idromassaggio. Disponibili tre differenti potenze: 480W, 650W o 950W.  
Range of blowers for hydromassage whirlpools. Available three different powers: 480W, 650W or 950W.



VOVO 450      **code: H307.Q**  
VOVO 650      **code: H307.R**  
VOVO 1000    **code: H307.S**



VOVO 450 PN    **code: H307.PNQ**  
VOVO 650 PN    **code: H307.PNR**  
VOVO 1000 PN   **code: H307.PNS**



VOVO 450      **code: H307.QF**  
VOVO 650      **code: H307.RF**  
VOVO 1000    **code: H307.SF**



VOVO 450 PN    **code: H307.QFP**  
VOVO 600 PN    **code: H307.RFP**  
VOVO 1000 PN   **code: H307.SFP**

**BLOWER 'OVOVO'**

**BLOWER 'OVOVO' FOR SPA**

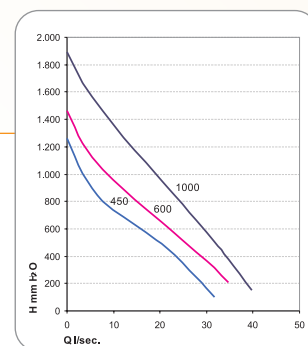


### Le principali caratteristiche:

massima silenziosità  
attacco Ø32mm non filettato o m1"1/2 filettato  
servizio continuo  
installazione semplice  
corpo aerodinamico in materiale plastico  
completo di cavo

### Main characteristics:

maximum quietness  
unthreaded fixing Ø 32mm or threaded fixing ø m1"1/2  
continuous service  
easy fitting  
aerodynamic plastic body  
complete with cable2



Potenza motore • motor power  
Ampere max. 230V / 50 Hz  
Dimensioni • Dimensions mm.

### VOVO 450

480 W  
2,3  
280 x 160 x h. 180

### VOVO 600

650 W  
3,1  
280 x 160 x h. 180

### VOVO 1000

950 W  
4,2  
280 x 160 x h. 180

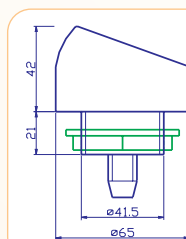
code: DGS.B01

## CONTROLLO BLOWER - BLOWER CONTROL



**FUNZIONI:**  
On/Off blower  
Sensore di livello  
+/- intensità  
Massaggio pulsato  
Asciugamento automatico  
a fine operazioni

**FUNCTIONS:**  
On/Off blower  
Level sensor  
+/- intensity  
Pulsating air massage  
Automatic drying  
after operations



Il Kit e' completo di tastiera, scatola IP X5 di controllo e sonda di livello.  
*All above shown system is supplied with keyboard, IP X5 control box and level sensor.*





Valvola di non ritorno per sistemi ad aria. Mandata ed uscita aria Ø 32mm  
*Non return valve for air system. Incoming and outcoming air Ø 32mm*  
**code: H307.V**



Valvola di non ritorno per sistemi ad aria. Mandata aria Ø 40mm e uscita aria Ø 32mm  
*Non return valve for air system. Incoming air Ø 40mm and outcoming air Ø 32mm*  
**code: H311.VN**

Valvola di non ritorno per sistemi ad aria. Mandata e uscita aria Ø 32mm  
*Non return valve for air system. Incoming and outcoming air Ø 32mm*  
**code: H312.VN**



Tubo flessibile per collegamento blower, completo di manicotti e fascette stringitubo.  
*Flexible hose for blower connection, complete of unions and clamps.*  
**1 mt code: H307.1T**  
**2 mt code: H307.T**



Collettore di sicurezza per blower.  
*Double air loop for blower.*  
**code: H308.L**



Fascette stringitubo inox 25-40 mm  
*Hose clamps stainless steel 25-40 mm*  
**code: 0068**



Giunto antivibrante per blower o pompa  
*Silent blocks for blower or pump*  
**code: 0097**



## COLLETTORE Ø 8 MM - MANIFOLD Ø 8 MM

Collettore a 4 uscite	4 end manifold	<b>code: H305-4</b>
Collettore a 8 uscite	8 end manifold	<b>code: H305-8</b>
Collettore a 12 uscite	12 end manifold	<b>code: H305-12</b>
Collettore a 16 uscite	16 end manifold	<b>code: H305-16</b>
Collettore a 20 uscite	20 end manifold	<b>code: H305-20</b>



## COLLETTORE Ø 10 MM - MANIFOLD Ø 10 MM

Collettore a 4 uscite	4 end manifold	<b>code: H306-4</b>
Collettore a 8 uscite	8 end manifold	<b>code: H306-8</b>
Collettore a 12 uscite	12 end manifold	<b>code: H306-12</b>
Collettore a 16 uscite	16 end manifold	<b>code: H306-16</b>
Collettore a 20 uscite	20 end manifold	<b>code: H306-20</b>

## UGELLI ARIA ATTACCO RAPIDO IN PLASTICA - AIR JET PLASTIC WITH QUICK FITTING



### Ugello aria. Corpo in nylon e copri ugello in ABS. Air jet. Nylon body and ABS cover plate.

Lunghezza corpo 70mm - *Body lenght 70mm*  
Attacco rapido Ø10mm - *Quick fitting mounting Ø 10mm*

bianco	white	<b>code: H338.PL.B</b>
cromo	chrome	<b>code: H338.PL.C</b>
dorato	gold	<b>code: H338.PL.D</b>



### Ugello aria. Corpo in nylon e copri ugello in ABS. Air jet. Nylon body and ABS cover plate.

Lunghezza corpo 70mm - *Body lenght 70mm*  
Attacco rapido Ø 8mm - *Quick fitting mounting Ø 8mm*

bianco	white	<b>code: H339.PL.B</b>
cromo	chrome	<b>code: H339.PL.C</b>
dorato	gold	<b>code: H339.PL.D</b>

## ACCESSORI CONSIGLIATI - RECOMMENDED ACCESSORIES



Raccordo rapido a ' T '   
*' T ' push on connector*  
Ø10 **code: 0060**  
Ø8 **code: 0070**



Raccordo rapido gomito   
*Elbow shaped push on connector*  
Ø10 **code: 0061**  
Ø8 **code: 0071**



Raccordo rapido diritto   
*Straight push on connector*  
Ø10 **code: 0062**  
Ø8 **code: 0063**



Tubo semirigido   
*Semirigid hose*  
8x10 **code: 0033.810**  
6x8 **code: 0033.608**

## UGELLI ARIA ATTACCO PORTAGOMMA - BRASS AIR JET WITH HOSE SUPPORT

Ugello aria. Corpo in ottone e copriugello in ABS, fissaggio a pressione, con valvola non ritorno.

Air jet. Brass body and ABS cover plate, push on fittings, with non return valve.



Lunghezza corpo 40mm - *Body lenght 40mm*

bianco white  
cromo chrome  
dorato gold

code: H333.NCH.B  
code: H333.NCH.C  
code: H333.NCH.D

Lunghezza corpo 50mm - *Body lenght 50mm*

bianco white  
cromo chrome  
dorato gold

code: H334.NCH.B  
code: H334.NCH.C  
code: H334.NCH.D

Lunghezza corpo 60mm - *Body lenght 60mm*

bianco white  
cromo chrome  
dorato gold

code: H335.NCH.B  
code: H335.NCH.C  
code: H335.NCH.D

Ugello aria. Corpo e copriugello in ottone, fissaggio a pressione.

Air jet. Brass body and cover plate, push on fittings.



Lunghezza corpo 40mm - *Body lenght 40mm*

cromo chrome  
dorato gold

code: H317.NCH.C  
code: H317.NCH.D

Lunghezza corpo 60mm - *Body lenght 60mm*

cromo chrome  
dorato gold

code: H315.NCH.C  
code: H315.NCH.D

Ugello aria. Corpo e copriugello in ottone, fissaggio a vite brugola.

Air jet. Brass body and cover plate, socket head screw fittings.



Lunghezza corpo 50mm - *Body lenght 50mm*

cromo chrome  
dorato gold

code: H323.NCH.C  
code: H323.NCH.D

Lunghezza corpo 60mm - *Body lenght 60mm*

cromo chrome  
dorato gold

code: H321.NCH.C  
code: H321.NCH.D

## ACCESSORI CONSIGLIATI - RECOMMENDED ACCESSORIES



Tubo 'cristallo' flessibile  
7 x 10mm per alimenti.  
Flexible 'cristallo' 7 x 10mm  
hose, suitable for food.  
code: 0033.710



Molle per fissaggio tubo aria.  
Spring for air hose fixing.  
code: H0028

## UGELLIARIA ATTACCO RAPIDO IN OTTONE - BRASS AIR JET WITH QUICK FITTING

Ugello aria. Corpo e copriugello in ottone, fissaggio a pressione.

Air jet. Brass body and cover plate, push on fittings.



Lunghezza corpo 40mm - *Body lenght 40mm*

cromo

chrome

**code: H318.NCH.C**

dorato

gold

**code: H318.NCH.D**

Lunghezza corpo 60mm - *Body lenght 60mm*

cromo

chrome

**code: H316.NCH.C**

dorato

gold

**code: H316.NCH.D**

Ugello aria. Corpo e copriugello in ottone, fissaggio a vite brugola.

Air jet. Brass body and cover plate, socket head screw fittings.



Lunghezza corpo 50mm

*Body lenght 50mm*

cromo

Attacco rapido Ø 8mm

*Quick fitting mounting Ø 8mm*

chrome

**code: H324.NCH.C**

dorato

gold

**code: H324.NCH.D**

Lunghezza corpo 60mm

*Body lenght 60mm*

cromo

Attacco rapido Ø 8mm

*Quick fitting mounting Ø 8mm*

chrome

**code: H322.NCH.C**

dorato

gold

**code: H322.NCH.D**

Ugello aria. Corpo in ottone e copriugello in ABS, fissaggio a pressione, con valvola non ritorno.

Air jet. Brass body and ABS cover plate, push on fittings, with non return valve.



Lunghezza corpo 50mm

*Body lenght 50mm*

bianco

Attacco rapido Ø 8mm

*Quick fitting mounting Ø 8mm*

white

**code: H304.NCH.B**

cromo

chrome

**code: H304.NCH.C**

dorato

gold

**code: H304.NCH.D**

## ACCESSORI CONSIGLIATI - RECOMMENDED ACCESSORIES



Tubo semirigido 6 x 8

*Semirigid hose 6 x 8*

**code: 0033.608**



Raccordo rapido diritto Ø 8 mm

*Straight push on connector Ø 8 mm*

**code: 0063**



Raccordo rapido gomito Ø 8 mm per ottone

*Elbow shaped push on connector Ø 8 mm for brass*

**code: 0064**



**Jet**

**Bocchetta rotante. Corpo in PVC e copribocchetta in ABS.**  
**Rotating jet. Body in PVC and cover in ABS material.**



bianco  
 cromo  
 dorato

white  
 chrome  
 gold

**code: H700.B**  
**code: H700.C**  
**code: H700.D**

Tubo entrata acqua: Ø interno 20mm - Ø esterno 25mm  
 Hose incoming water: internal Ø 20mm - external Ø 25mm  
 Tubo entrata aria: Ø interno 6,5mm - Ø esterno 11mm  
 Hose incoming air: internal Ø 6,5mm - external Ø 11mm



bianco  
 cromo  
 dorato

white  
 chrome  
 gold

**code: H705.B**  
**code: H705.C**  
**code: H705.D**

Tubo entrata acqua: Ø interno 20mm - Ø esterno 25mm  
 Hose incoming water: internal Ø 20mm - external Ø 25mm  
 Tubo entrata aria: Ø interno 6,5mm - Ø esterno 11mm  
 Hose incoming air: internal Ø 6,5mm - external Ø 11mm

# JET TYPE AMBRA

**Bocchetta a getto fisso. Corpo in PVC e copribocchetta in ABS.**  
**Fixed directional jet. Body in PVC and cover in ABS.**



bianco  
 cromo  
 dorato

white  
 chrome  
 gold

**code: H720.B**  
**code: H720.C**  
**code: H720.D**

Tubo entrata acqua: Ø interno 20mm - Ø esterno 25mm  
 Hose incoming water: internal Ø 20mm - external Ø 25mm  
 Tubo entrata aria: Ø interno 6,5mm - Ø esterno 11mm  
 Hose incoming air: internal Ø 6,5mm - external Ø 11mm

## ACCESSORI CONSIGLIATI - RECOMMENDED ACCESSORIES



Collettore  
 circuito acqua  
 Manifold for  
 water circuit.  
**code: H454**



' T ' ridotto  
 ø 10 x 16 x 10  
 Reduced ' T '  
 ø 10 x 16 x 10 .  
**code: H00.78**



Riduzione ø  
 20/12  
 Reduction ø  
 20/12  
**code: H0079**



Tubo retinato in rotoli da 50 mt  
 Reinforced hose available in  
 rolls of 50 mt  
 10 x 16 **code: 0066**  
 12 x 18 **code: 0086**



Tubo ø 20 mm in rotoli da  
 25 mt. Hose ø 20 mm  
 available in rolls of 25 mt.  
**code: 0032.520**

**PER L'INCOLLAGGIO USARE TANGIT - FOR GLUEING USE TANGIT**

## JET TYPE BABY

Bocchetta autodrenante, con getto orientabile e chiudibile. Corpo in PVC; ugello, ghiera corpo e copribocchetta in ABS.  
Self draining jet, with directional and closable Jet. Body in PVC; nozzle, wall fitting and cover in ABS material.

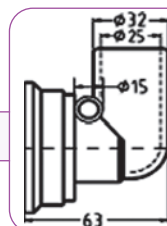


### PLACCA ø70 - UGELLO COVER ø70 - NOZZLE

bianco - bianco  
cromo - bianco  
cromo - cromo  
dorato - bianco  
dorato - dorato

white - white  
chrome - white  
chrome - chrome  
gold - white  
gold - gold

code: H600.B  
code: H600.C  
code: H600.CC  
code: H600.D  
code: H600.DD



### PLACCA ø80 - UGELLO COVER ø80 - NOZZLE

bianco - bianco  
cromo - bianco  
cromo - cromo  
dorato - bianco  
dorato - dorato

white - white  
chrome - white  
chrome - chrome  
gold - white  
gold - gold

code: H600.BF  
code: H600.CF  
code: H600.CCF  
code: H600.DF  
code: H600.DDF

## ACCESSORI CONSIGLIATI - RECOMMENDED ACCESSORIES



Tenuta a labbro per montaggio senza silicone.  
U-type gasket for jet fixing without silicone.  
code: H600.TV



' T ' PVC. Ø interno 32mm  
' T ' PVC. Internal Ø 32mm  
code: 0053.PVC.B



Gomito 90° PVC. Ø interno 32mm  
Elbow 90° PVC. Internal Ø 32mm  
code: 0054.PVC.B



Chiave per fissaggio ghiera  
Fixing key  
code: H000.45

Tappo chiusura linea aria Ø 10mm - End plug air system Ø 10mm

code: H910

**PER L'INCOLLAGGIO USARE TANGIT - FOR GLUEING USE TANGIT**

Bocchetta autodrenante, con getto orientabile e chiudibile. Corpo in PVC; ugello, ghiera corpo e copribocchetta in ABS. Self draining jet, with directional and closable Jet. Body in PVC; nozzle, wall fitting and cover in ABS material.

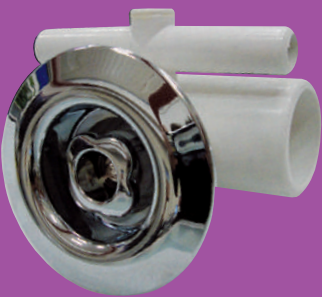
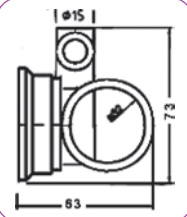


### PLACCA ø70 - UGELLO COVER ø70 - NOZZLE

bianco - bianco  
cromo - bianco  
cromo - cromo  
dorato - bianco  
dorato - dorato

white - white  
chrome - white  
chrome - chrome  
gold - white  
gold - gold

code: H650.B  
code: H650.C  
code: H650.CC  
code: H650.D  
code: H650.DD



### PLACCA ø80 - UGELLO COVER ø80 - NOZZLE

bianco - bianco  
cromo - bianco  
cromo - cromo  
dorato - bianco  
dorato - dorato

white - white  
chrome - white  
chrome - chrome  
gold - white  
gold - gold

code: H650.BF  
code: H650.CF  
code: H650.CCF  
code: H650.DF  
code: H650.DDF

## ACCESSORI CONSIGLIATI - RECOMMENDED ACCESSORIES



Tenuta a labbro per montaggio senza silicone.  
U-type gasket for jet fixing without silicone.

code: H600.TV



Chiave per fissaggio ghiera  
Fixing key

code: H000.45



Tappo chiusura linea acqua Ø 32mm  
End plug water system Ø 32mm

code: 0052

Tappo chiusura linea aria Ø 10mm - End plug air system Ø 10mm

code: H910

**PER L'INCOLLAGGIO USARE TANGIT - FOR GLUEING USE TANGIT**



## JET TYPE V

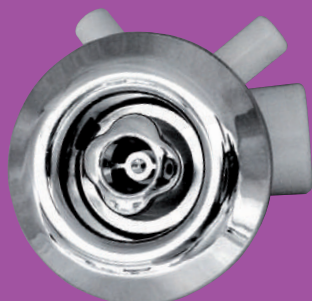
Bocchetta autodrenante, con getto orientabile e chiudibile. Costruita in ABS.

Self draining jet, with directional and closable Jet. Made in ABS material.



### PLACCA ø70 - UGELLO COVER ø70 - NOZZLE

bianco - bianco	white - white	<b>code: H620.B</b>
cromo - bianco	chrome - white	<b>code: H620.C</b>
cromo - cromo	chrome - chrome	<b>code: H620.CC</b>
dorato - bianco	gold - white	<b>code: H620.D</b>
dorato - dorato	gold - gold	<b>code: H620.DD</b>



### PLACCA ø80 - UGELLO COVER ø80 - NOZZLE

bianco - bianco	white - white	<b>code: H620.BF</b>
cromo - bianco	chrome - white	<b>code: H620.CF</b>
cromo - cromo	chrome - chrome	<b>code: H620.CCF</b>
dorato - bianco	gold - white	<b>code: H620.DF</b>
dorato - dorato	gold - gold	<b>code: H620.DDF</b>

## ACCESSORI CONSIGLIATI - RECOMMENDED ACCESSORIES



Tenuta a labbro per montaggio senza silicone.  
U-type gasket for jet fixing without silicone.  
**code: H600.TV**



Riduzione ø 32/25  
Reduction ø 32/25  
**code: H00120.FR**



Chiave per fissaggio ghiera  
Fixing key  
**code: H000.45**



Tappo chiusura linea acqua Ø 32mm  
End plug water system Ø 32mm  
**code: 0052**

Tappo chiusura linea aria Ø 10mm - End plug air system Ø 10mm

**code: H910**

**PER L'INCOLLAGGIO USARE TANGIT - FOR GLUEING USE TANGIT**

Bocchetta autodrenante, con getto orientabile e chiudibile. Costruita in ABS.

Self draining jet, with directional and closable Jet. Mader in ABS material.



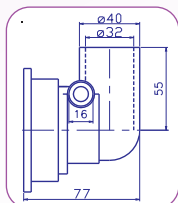
### PLACCA ø70 - UGELLO

bianco - bianco  
cromo - bianco  
cromo - cromo  
dorato - bianco  
dorato - dorato

### COVER ø70 - NOZZLE

white - white  
chrome - white  
chrome - chrome  
gold - white  
gold - gold

code: H301.ZB  
code: H301.ZC  
code: H301.ZCC  
code: H301.ZD  
code: H301.ZDD



### PLACCA ø90 - UGELLO

bianco - bianco  
cromo - bianco  
cromo - cromo  
dorato - bianco  
dorato - dorato

### COVER ø90 - NOZZLE

white - white  
chrome - white  
chrome - chrome  
gold - white  
gold - gold

code: H301.Z90.B  
code: H301.Z90.C  
code: H301.Z90.CC  
code: H301.Z90.D  
code: H301.Z90.DD

Bocchetta autodrenante, con getto orientabile e chiudibile. Costruita in ABS.

Self draining jet, with directional and closable Jet. Mader in ABS material.



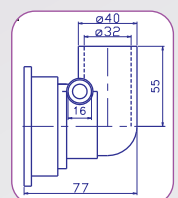
### PLACCA ø70 - UGELLO

bianco - bianco  
cromo - bianco  
cromo - cromo  
dorato - bianco  
dorato - dorato

### COVER ø70 - NOZZLE

white - white  
chrome - white  
chrome - chrome  
gold - white  
gold - gold

code: H301.GB  
code: H301.GC  
code: H301.GCC  
code: H301.GD  
code: H301.GDD



### PLACCA ø90 - UGELLO

bianco - bianco  
cromo - bianco  
cromo - cromo  
dorato - bianco  
dorato - dorato

### COVER ø90 - NOZZLE

white - white  
chrome - white  
chrome - chrome  
gold - white  
gold - gold

code: H301.G90.B  
code: H301.G90.C  
code: H301.G90.CC  
code: H301.G90.D  
code: H301.G90.DD

## JET TYPE T

Bocchetta speciale per impianti di cromoterapia, autodrenante e chiudibile. Costruita in abs.  
Special Jet for cromatherapy system, self draining and closable jet. Made in abs material.



**PLACCA ø70 - UGELLO**    **COVER ø70 - NOZZLE**

trasparente - trasparente

transparent- transparent

**code: H301.70.T**

**PLACCA ø90 - UGELLO**    **COVER ø90 - NOZZLE**

trasparente - trasparente

transparent- transparent

**code: H301.90.T**

## ACCESSORI CONSIGLIATI - RECOMMENDED ACCESSORIES



Tenuta a labbro per montaggio senza silicone.

U-type gasket for jet fixing without silicone.

**code: H600.TV**



Chiave per fissaggio ghiera

Fixing key

**code: H000.45**



' T ' ABS. Ø 32 x 40 x 32 mm

**code: 0050**

Tappo chiusura linea aria Ø 10mm - End plug air system Ø 10mm

**code: H910**

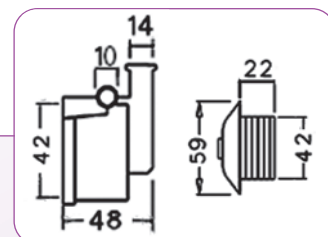
**PER L'INCOLLAGGIO USARE TANGIT - FOR GLUEING USE TANGIT**

Bocchetta a montaggio rapido, senza colla.  
Quick fitting jet, without glue.



## PLACCA - UGELLO - COVER - NOZZLE

bianco - bianco	white - white	<b>code: 450.BB</b>
cromo - cromo	chrome - chrome	<b>code: 450.CC</b>
dorato - dorato	gold - gold	<b>code: 450.DD</b>



## ACCESSORI CONSIGLIATI - RECOMMENDED ACCESSORIES



Molle fissaggio tubo aria  
Spring for air hose fixing.  
**code: 0076**



Tubo retinato aria  $\varnothing$  10 x 16.  
In rotoli da 50 mt.  
Reinforced air hose  $\varnothing$  10 x 16.  
Available in reels of 50mt.  
**code: 0066**



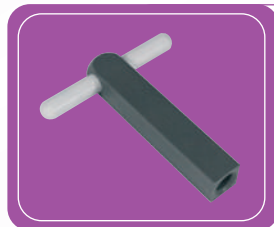
Molle fissaggio tubo acqua.  
Spring for water hose fixing.  
**code: 0079**



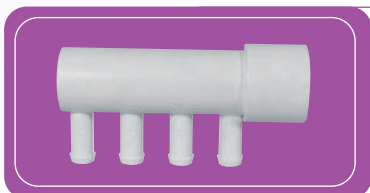
Tubo retinato acqua  $\varnothing$  12 x 18.  
In rotoli da 50 mt.  
Reinforced water hose  $\varnothing$  12 x 18.  
Available in reels of 50mt.  
**code: 0086**



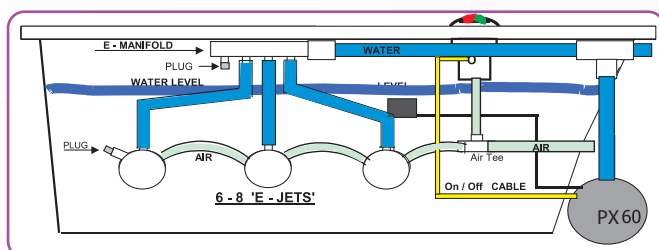
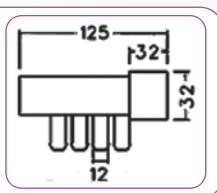
' T ' ridotto  $\varnothing$  10 x 16 x 10  
Reduced ' T '  $\varnothing$  10 x 16 x 10 .  
**code: H00.78**



Chiave per fissaggio ghiera  
Fixing key  
**code: H000.40**



Collettore circuito acqua.  
Manifold for water circuit.  
**code: H454**



## JET TYPE RELAX

Bocchetta con finiture morbide e colorate, dal design moderno. Corpo in ABS e copribocchetta in gomma.  
Jet with soft and coloured finishing, modern design. Body in ABS and cover in rubber.



### PLACCA Ø 70

bianco  
verde  
blu

### COVER Ø 70

white  
green  
blue

code: H440.BI  
code: H440.VE  
code: H440.BL

### PLACCA Ø 41

bianco  
verde  
blu

### COVER Ø 41

white  
green  
blue

code: H441.BI  
code: H441.VE  
code: H441.BL

Bocchetta Relax con copribocchetta rigido in ABS.  
Jet Relax with rigid cover in ABS.



### PLACCA Ø 41 - COVER Ø 41

bianco  
cromo  
dorato

white  
chrome  
gold

code: H442.B  
code: H442.C  
code: H442.D

## ACCESSORI CONSIGLIATI - RECOMMENDED ACCESSORIES

Tappo chiusura linea aria Ø 10mm - End plug air system Ø 10mm

code: H910

Tappo chiusura linea acqua Ø 32mm - End plug water system Ø 32mm

code: 0052

**PER L'INCOLLAGGIO USARE TANGIT - FOR GLUEING USE TANGIT**

## JET TYPE MAXI

Bocchetta per minipiscine, costruita in ABS.

Jet for Spa, made of ABS material.



### PLACCA - UGELLO COVER - NOZZLE

bianco - bianco

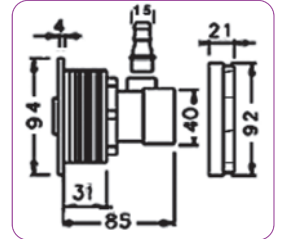
white - white

code: 310.B

cromo - bianco

chrome - white

code: 310.C



Bocchetta tradizionale, costruita in PVC.

Traditional jet, made of PVC material.



### PLACCA - SFERA COVER - EYEBALL

bianco - bianco

white - white

code: 300.B

cromo - bianco

chrome - white

code: 300.C

cromo - cromo

chrome - chrome

code: 300.CC

dorato - bianco

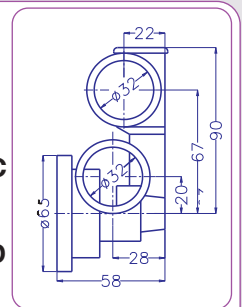
gold - white

code: 300.D

dorato - dorato

gold - gold

code: 300.DD



## ACCESSORI CONSIGLIATI - RECOMMENDED ACCESSORIES



Riduzione tubo aria  $\varnothing$  32x15 mm

Air hose reduction  $\varnothing$  32x15 mm

code: 0055



Tappo chiusura linea acqua  $\varnothing$  32 mm

End plug water system  $\varnothing$  32 mm

code: 0052

**PER L'INCOLLAGGIO USARE TANGIT - FOR GLUEING USE TANGIT**

# ASPIRAZIONI - SUCTIONS

Bocchetta aspirazione laterale, con corpo e copribocchetta in ABS.

Side suction, with body and cover in ABS.



**Ø 70 MM**

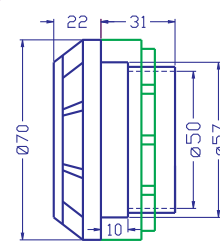
bianco  
cromo  
dorato

white  
chrome  
gold

**code: H299.PD.B**

**code: H299.PD.C**

**code: H299.PD.D**



Anello di tenuta.  
Flat gasket.

**code: H0087**



**Ø 90 MM**

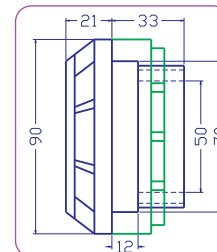
bianco  
cromo  
dorato

white  
chrome  
gold

**code: 299.B**

**code: 299.C**

**code: 299.D**



Anello di tenuta.  
Flat gasket.

**code: H0084**



Raccordo PVC 90° - Ø 40mm  
Elbow PVC 90° - Ø 40mm  
**code: 0025.PVC**

Raccordo PVC 90° - Ø 50mm  
Elbow PVC 90° - Ø 50mm  
**code: 0041.PVC**

**PER L'INCOLLAGGIO USARE TANGIT - FOR GLUEING USE TANGIT**

## ASPIRAZIONE 'SECURITY' - SAFETY SUCTION "SECURITY"

Bocchetta di aspirazione con gomito incorporato. Corpo e placca in ABS, munito di attacco per la valvola di sicurezza e per l'ingresso carico vasca.  
Suction with incorporated elbow. ABS body and cover, equipped with attachment suitable for safety valve and inlet for bath filler.



Foro vasca Ø 62

### ATTACCO Ø 40 - ATTACHMENT Ø 40

bianco  
cromo  
dorato

white  
chrome  
gold

code: H500.4B  
code: H500.4C  
code: H500.4D

### ATTACCO Ø 50 - ATTACHMENT Ø 50

bianco  
cromo  
dorato

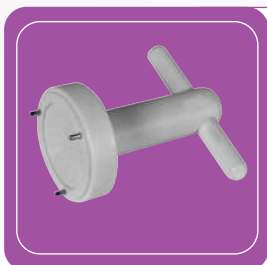
white  
chrome  
gold

code: H500.5B  
code: H500.5C  
code: H500.5D

## ACCESSORI CONSIGLIATI - RECOMMENDED ACCESSORIES



Valvola di sicurezza completa di tubo lunghezza 50 cm  
Safety valve complete with hose length 50 cm  
code: H500.V



Chiave per fissaggio placca.  
Fixing key  
code: H000.55

**PER L'INCOLLAGGIO USARE TANGIT - FOR GLUEING USE TANGIT**



# TAPPO DISINFEZIONE

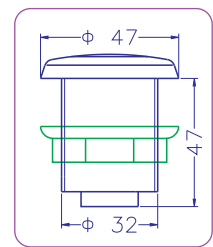
Tappo carico disinfettante liquido.  
Refill device for disinfection liquid.



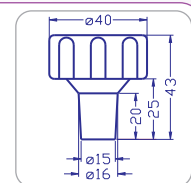
bianco  
cromo  
dorato

white  
chrome  
gold

code: H298.B  
code: H298.C  
code: H298.D



Portagomma  
Hose support  
code: H312.P



Contenitore per disinfettante liquido.  
Disinfection liquid container.  
code: 725.B

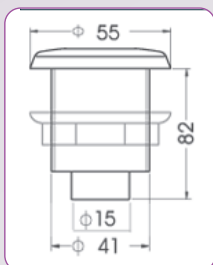


Ugello per inserimento disinfettante  
Nozzle for disinfectant input  
code: H323.NCH.C

## BICOMANDO POMPA/DISINFEZIONE - BI-COMMAND PUMP/DISINFECTION

Comando digitale a due funzioni con regolazione aria manuale:  
on/off pompa  
disinfezione  
Attacco aria Ø 15mm

Bi-command two functions with manual air command:  
on/off pump  
disinfection  
Air connection Ø 15mm



bianco - white  
cromo - chrome  
dorato - gold

code:HM2.BIDI.MB  
code:HM2.BIDI.MC  
code:HM2.BIDI.MD

code:HM2.BIDI.TB  
code:HM2.BIDI.TC  
code:HM2.BIDI.TD

code:HM2.BIDI.QB  
code:HM2.BIDI.QC  
code:HM2.BIDI.QD

code:HM2.BIDI.RB  
code:HM2.BIDI.RC  
code:HM2.BIDI.RD

code:HM2.BIDI.CB  
code:HM2.BIDI.CC  
code:HM2.BIDI.CD



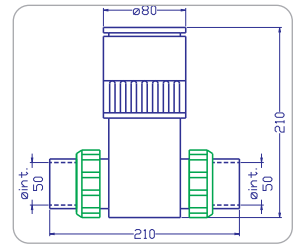
Centralina per bicomando  
Controlbox for bi-command switch  
code: CBS.BI.D



Impianto disinfezione con pastiglie di bromo, per vasche idromassaggio e SPA. Viene fornito completo di una carica di 10 pastiglie, della durata di 150-200 cicli.

Disinfection system with bromine tablets, for whirlpool and SPA. Supplied complete with 10 tablets. This load will last for approx. 150-200 massage cycles.

**code: 306.0**



Chiave per apertura alloggio pastiglie.

Key for opening pastille basket.

**code: 000.40**



Confezione pastiglie bromo per ricarica brominator. Peso 5kg

Tablets for brominator refilling purposes. Weight 5kg

**code: 000.45**

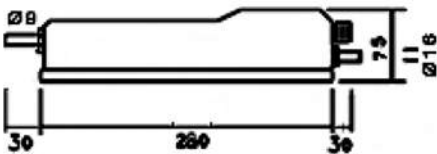
## OZONATORE - OZONATOR



Generatore di ozono equipaggiato con una lampada tipo 'Corona', con produzione di ozono pari a 0,02 ppm, conforme alle regolamentazioni europee. L'ozono ha effetto curativo per la pelle e svolge un'azione disinfettante nell'acqua.

Ozone generator equipped with one 'Corona' lamp, with a production of ozone equivalent to 0,02 ppm, accordance with European Norms. Ozone therapy has a curing effect on your skin and has a disinfecting action in the water.

**CODE: H340/OZ**



## PULSANTE PNEUMATICO - PN PUSH BUTTON

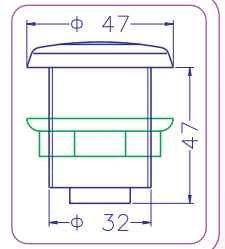
Pulsante pneumatico costruito in ABS. - *Pneumatic push button, made in ABS material.*



bianco  
cromo  
dorato

white  
chrome  
gold

code: H296.B  
code: H296.C  
code: H296.D



Interruttore pneumatico, fissaggio a vite. Attacco aria Ø 3mm  
Pneumatic switch, screw fixing. Air fixing Ø 3mm

code: 0031

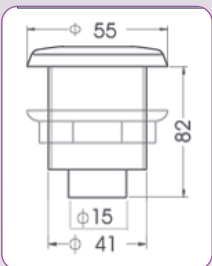


Tubo trasparente per interruttore pneumatico ø 3x5  
Transparent hose for air switch Ø 3X5

code: 0082

## MONOCOMANDO PNEUMATICO - PNEUMATIC CONTROL SWITCHES

Interruttore pneumatico e regolatore aria. - *Pneumatic push on/off and air control.*



bianco - white  
cromo - chrome  
dorato - gold

code:HM2.PN.MB  
code:HM2.PN.MC  
code:HM2.PN.MD

code:HM2.PN.TB  
code:HM2.PN.TC  
code:HM2.PN.TD

code:HM2.PN.QB  
code:HM2.PN.QC  
code:HM2.PN.QD

code:HM2.PN.RB  
code:HM2.PN.RC  
code:HM2.PN.RD

code:HM2.PN.CB  
code:HM2.PN.CC  
code:HM2.PN.CD



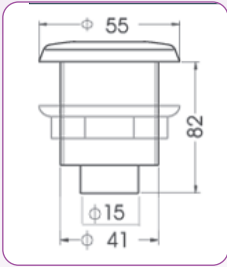
Centralina pneumatica completa di sensore di livello.  
Pneumatic control box complete with level sensor.  
code: CBS.35.PN



' T ' Ø 16mm  
code: H0047

# MONOCOMANDO DIGITALE - DIGITAL CONTROL SWITCHES

Monocomando digitale con regolatore aria. - *Digital on/off with air control.*



bianco - white  
cromo - chrome  
dorato - gold

code:HM2.DG.MB  
code:HM2.DG.MC  
code:HM2.DG.MD

code:HM2.DG.TB  
code:HM2.DG.TC  
code:HM2.DG.TD

code:HM2.DG.QB  
code:HM2.DG.QC  
code:HM2.DG.QD

code:HM2.DG.RB  
code:HM2.DG.RC  
code:HM2.DG.RD

code:HM2.DG.CB  
code:HM2.DG.CC  
code:HM2.DG.CD

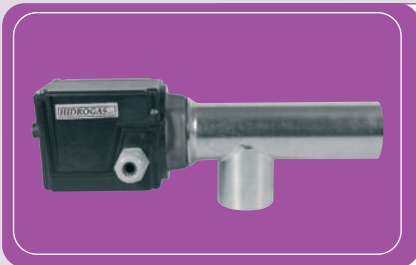


Centralina completa di sensore di livello.  
Control box complete with level sensor.  
**code: CBS.33.DG**  
Centralina senza sensore di livello.  
Control box without level sensor.  
**code: CB.34.DG**



' T ' Ø 16mm  
**code: H0047**

## RISCALDATORE - HEATER

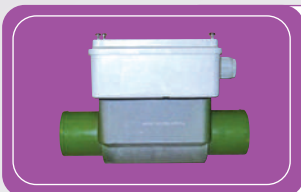


Temperatura predisposta da 0° a 40° C.  
Preset temperature from 0° to 40° C.

650 w      **code: 0058**  
1500 w     **code: 0080**  
3000 w     **code: 0091**



Portagomma in ottone 1"1/2 x M 40mm  
Brass hose support 1"1/2 x M 40mm  
**Code:**



Temperatura predisposta da 0° a 40° C.  
Preset temperature from 0° to 40° C.  
1300 w      **code: 0013**

# BICOMANDO POMPA LUCE - BI-COMMAND PUMP/LIGHT

Comando digitale a due funzioni con regolazione aria manuale:  
on/off pompa  
on/off luce (max 20W)  
Attacco aria Ø 15mm

Bi-command two functions with manual air command:  
on/off pump  
on/off spotlight  
Air connection Ø 15mm



bianco - white

code:HM2.BI.MB

code:HM2.BI.TB

code:HM2.BI.QB

code:HM2.BI.RB

code:HM2.BI.CB

cromo - chrome

code:HM2.BI.MC

code:HM2.BI.TC

code:HM2.BI.QC

code:HM2.BI.RC

code:HM2.BI.CC

dorato - gold

code:HM2.BI.MD

code:HM2.BI.TD

code:HM2.BI.QD

code:HM2.BI.RD

code:HM2.BI.CD



Centralina per bicomando  
Controlbox for bi-command switch  
code: **CBS.BI.F**

## FARI - SPOTLIGHT

Fari sommersibili completamente in ottone, alimentati a 12 Volt.  
Underwater spot lights entirely of solid brass, powered 12 Volt.

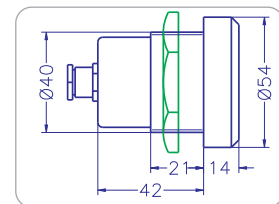


bianco  
cromo

white  
chrome

code: **311.F-54.B**

code: **311.F-54.C**

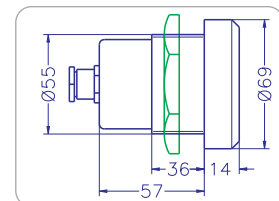


bianco  
cromo

white  
chrome

code: **311.G-69.B**

code: **311.G-69.C**



## TRASFORMATORE



Senza scatola stagna  
Without water tight box  
code: **TRA.12**

inserito in scatola stagna.  
inside a water tight box.  
code: **TRA.12.IP**

inserito in scatola stagna  
con interruttore  
pneumatico.  
inside a water tight box  
with air switch.  
code: **TRA12.AS**

## REGOLATORE ARIA 1 - AIR CONTROL 1

Regolatore aria, con aspirazione sotto il bordo vasca e valvola di non ritorno. Costruito in ABS.

Air control, with suction underneath the tub's rim and non return valve. Made in ABS material.

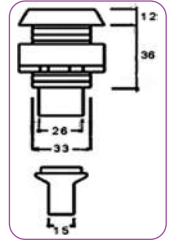


bianco - white  
cromo - chrome  
dorato - gold

code: H460.TB

code: H460.TC

code: H460.TD



## REGOLATORE ARIA 2 - AIR CONTROL 2

Regolatore aria, con aspirazione sopra il bordo vasca

Air control, with suction on the tub's rim

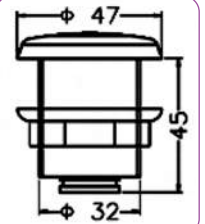


bianco                      white  
cromo                      chrome  
dorato                      gold

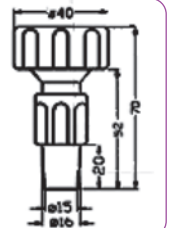
code: H297.B

code: H297.C

code: H297.D

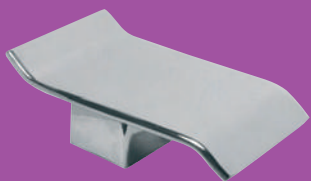


Portagomma con valvola.  
Hose support with valve.  
code: H312.PV

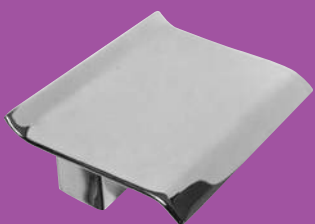


' T ' Ø 16mm  
code: H0047

## BOCCHIE BORDO VASCA - BATH EDGE TUP "WATERFALL EFFECT"



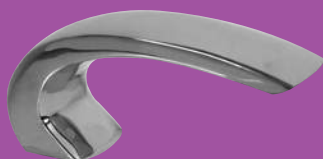
Modello CLIO in ottone cromato  
Model CLIO in chromed brass  
**code: 64198.C**



Modello DAPHNE in ottone cromato  
Model DAPHNE in chromed brass  
**code: 64199.C**

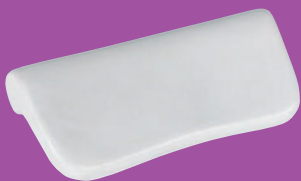


Modello UFO in ottone cromato  
Model UFO in chromed brass  
**code: 64201.C**



Modello CIGNO in ottone cromato  
Model CIGNO in chromed brass  
**code: 64200.C**

## POGGIATESTA E MANIGLIE - HEADREST AND HANDLES



Poggiatesta in poliuretano di colore bianco, con attacco a ventosa.  
Larghezza 305 mm, altezza 150 mm, profondità 85 mm.  
*Headrest made of polyurethane in white colour, with suction pads.*  
Width 305 mm, height 150 mm, depth 85 mm.  
**code: 0073**



Poggiatesta GIRASOLE in gel poliuretano, aderente a qualsiasi superficie.  
Colori disponibili: bianco, nero, blu, rosso e acqua marina.  
Larghezza 300 mm, altezza 120 mm, profondità 40 mm.  
*Headrest GIRASOLE made of polyurthane gel. It is sticking to any surface.*  
Colours available: white, black, blue, red and aquamarine.  
Width 300 mm, height 120 mm, depth 40 mm.  
**code: 00045**



Poggiatesta ORCHIDEA in gel poliuretano, aderente a qualsiasi superficie.  
Colori disponibili: bianco, nero, blu, rosso e acqua marina.  
Larghezza 300 mm, altezza 120 mm, profondità 40 mm.  
*Headrest ORCHIDEA made of polyurthane gel. It is sticking to any surface.*  
Colours available: white, black, blue, red and aquamarine.  
Width 300 mm, height 120 mm, depth 40 mm.  
**code: 00075**



Maniglia per vasca tipo "A", in poliuretano.  
Larghezza 225 mm, altezza 60 mm, profondità 25 mm,  
2 punti fissaggio con interasse 50 mm.  
*Handle for bathtub type "A", made of polyurethane.*  
Width 225 mm, height 60 mm, depth 25 mm. 2 fixing points with 50 mm centre line.  
**code: 0078.A**



Maniglia per vasca tipo "B", in poliuretano.  
Larghezza 225 mm, altezza 45 mm, profondità 40-25-38 mm,  
2 punti fissaggio con interasse 185 mm.  
*Handle for bathtub type "B", made of polyurethane.*  
Width 225 mm, height 45 mm, depth 40-25-38 mm.  
2 fixing points with 185 mm centre line.  
**code: 0078.B**

## TUBO - HOSE



Tubo flessibile in PVC per sistemi ad acqua:  
Flexible hose in PVC for water systems:

Ø 20	<b>code: 0032.520</b>
Ø 32	<b>code: 0032.532</b>
Ø 40	<b>code: 0032.540</b>
Ø 50	<b>code: 0032.550</b>

Tubo rinforzato per sistemi ad aria:  
Reinforced hose for air system:

Ø 10 x 16	<b>code: 0066</b>
Ø 12 x 18	<b>code: 0086</b>
Ø 15 x 21	<b>code: 0033.1521</b>



# CONTROLLI - CONTROLS

Tutti i sistemi sono completi di tastiera, scatola IP X5 di controllo e quant'altro sia necessario al loro funzionamento.  
All systems are supplied with keyboard, IP X5 control box and whatever is necessary for their operating.



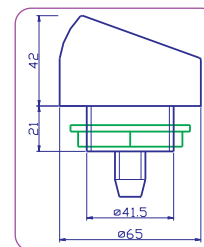
code: DGF.200

**FUNZIONI:**

On/Off pompa 230 VAC - 50 Hz  
Sensore di livello  
Durata ciclo 15 minuti

**FUNCTIONS:**

On/Off pump 230 VAC - 50 Hz  
Level sensor  
Time setting of cycle 15 minutes



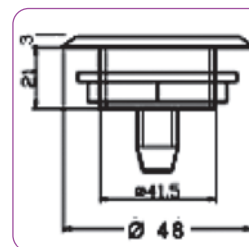
code: DGP.300

**FUNZIONI:**

On/off blower  
+/- intensita'  
On/off pompa  
230VAC/50Hz  
Sensore di livello  
Pulizia ugelli in automatico

**FUNCTIONS:**

On/off blower  
+/- blower intensity control  
On/off pump  
230VAC/50Hz  
Level sensor  
Automatic air jet cleaning



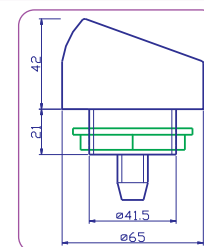
code: DGS.C05

**FUNZIONI:**

On/off blower  
+/- intensita'  
On/off pompa  
230VAC/50Hz  
Sensore di livello  
Pulizia ugelli in automatico

**FUNCTIONS:**

On/off blower  
+/- blower intensity control  
On/off pump  
230VAC/50Hz  
Level sensor  
Automatic air jet cleaning



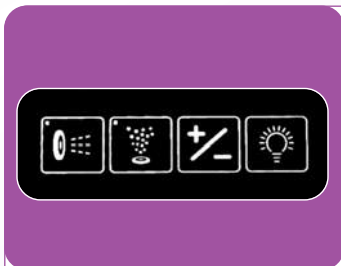
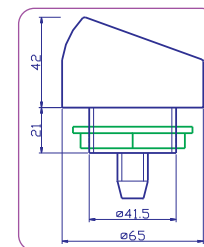
code: DGS.C02

**FUNZIONI:**

On/off blower  
+/- intensita'  
On/off pompa  
230VAC/50Hz  
Sensore di livello  
On/off luce 12V  
Pulizia ugelli in automatico

**FUNCTIONS:**

On/off blower  
+/- blower intensity control  
On/off pump  
230VAC/50Hz  
Level sensor  
On/off light 12V  
Automatic air jet cleaning



code: DGS.400

**FUNZIONI:**

On/off pompa  
230VAC/50Hz  
On/off blower  
+/- intensita'  
Effetto pulsato  
Pulizia ugelli in automatico  
Cromoterapia o solo luce

**FUNCTIONS:**

On/off pump  
230VAC/50Hz  
On/off blower  
+/- blower intensity control  
Pulsating effect  
Automatic air jet cleaning  
Cromotherapy or white light



code: DGS.199

**FUNZIONI:**

On/off blower  
+/- intensita'  
On/off pompa  
230V/50Hz  
Sensore di livello  
Effetto onda  
Massaggio pulsato  
On/off luce O on/off ozono  
Durata cicli 20 minuti

Pulizia ugelli in automatico  
Lettura temperatura e  
tempo rimanente

**FUNCTIONS:**

On/off blower  
+/- blower intensity control  
On/off pump  
230V/50Hz

Level sensor  
Wave effect  
Pulsating air massage  
On/off light OR on/off  
ozonator  
Time setting of cycles 20  
minutes  
Automatic air jet cleaning  
Show water temperature  
and remaining time



## GOMITO a 90° - Elbow 90°

Ø int. 20 - Ø est. 27  
 Ø int. 25 - Ø est. 32,5  
 Ø int. 32 - Ø est. 40  
 Ø int. 40 - Ø est. 50  
 Ø int. 50 - Ø est. 60  
 Ø int. 63 - Ø est. 75

code: 0026.PVC  
 code: 0023.PVC  
 code: 0024.PVC  
 code: 0025.PVC  
 code: 0041.PVC  
 code: 0043.PVC



## GOMITO a 45° - Elbow 45°

Ø int. 20 - Ø est. 28  
 Ø int. 25 - Ø est. 34  
 Ø int. 32 - Ø est. 40  
 Ø int. 40 - Ø est. 51  
 Ø int. 50 - Ø est. 61  
 Ø int. 63 - Ø est. 75

code: 0073.PVC  
 code: 0035.PVC  
 code: 0039.PVC  
 code: 0040.PVC  
 code: 0042.PVC  
 code: 0063.PVC



## ' T ' 90°

Ø int. 20 - Ø est. 27  
 Ø int. 25 - Ø est. 33,5  
 Ø int. 32 - Ø est. 40  
 Ø int. 40 - Ø est. 50  
 Ø int. 50 - Ø est. 60  
 Ø int. 63 - Ø est. 75

code: 0069.PVC  
 code: 0050.PVC  
 code: 0049.PVC  
 code: 0044.PVC  
 code: 0045.PVC  
 code: 0051.PVC



## ' T ' ridotto - reduced ' T '

Ø int. 32 - 20 - 32  
 Ø int. 32 - 25 - 32  
 Ø int. 40 - 32 - 40  
 Ø int. 50 - 40 - 50

code: 0054.PVC  
 code: 0075.PVC  
 code: 0055.PVC  
 code: 0056.PVC



## Bussola di riduzione - Reduction fitting

Ø int. 20 - Ø est. 32  
 Ø int. 32 - Ø est. 40  
 Ø int. 40 - Ø est. 50

code: 0092.PVC  
 code: 0057.PVC  
 code: 0059.PVC



## RIDUZIONE - REDUCTION

ø 32 - 25

code: H00120.FR



## ' T ' 90° con portagomma - ' T ' 90° with hose support

Ø 10	code: 0077
Ø 12	code: 0083
Ø 14	code: 0046
Ø 16	code: H0047



## ' T ' ridotto con portagomma Reduced ' T ' with hose support

Ø 16 - 10 - 16	code: H11.50
Ø 10 - 16 - 10	code: H00.78



## ' T ' 45°

Ø int. 20 - Ø est.27	code: 0074.PVC
Ø int. 25 - Ø est.33	code: 0072.PVC
Ø int. 32 - Ø est.42	code: 0076.PVC



## Fascette stringitubo in acciaio inox Stainless steel hose clamps

10-16	code: 0065
12-20	code: LRO20
16-27	code: LRO25
25-40	code: 0068



## Fascette stringitubo in plastica Plastic clips hose clamps

15 - 17,1	code: HCL-F
18,1 - 20,6	code: HCL-H
20,3 - 23	code: HCL-J
22,2 - 24,9	code: HCL-K

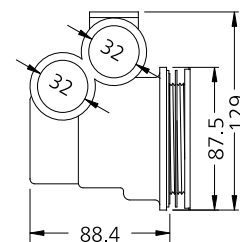


## Tangit

Colla per ABS e PVC  
Glue for ABS and PVC  
TGH.KG1  
TGK.GR125



Bocchetta autodrenante con getto orientabile e chiudibile.  
Self draining jet with directional and closable jet.  
bianco - white  
**code: SPA.H-11TB**



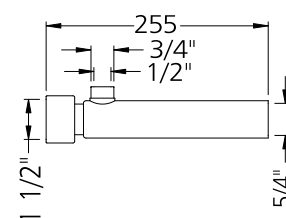
Bocchetta con getto orientabile, indicata per installazioni su vasche in cemento.  
Jet with directional jet, suitable for gunite installations.  
bianco - white  
**code: SPA.H-4654-01**



Bocchetta con getto girevole, indicata per installazioni su vasche in cemento. Jet with rotating jet, suitable for gunite installations.  
bianco - white  
**code: SPA.H-4725-61**



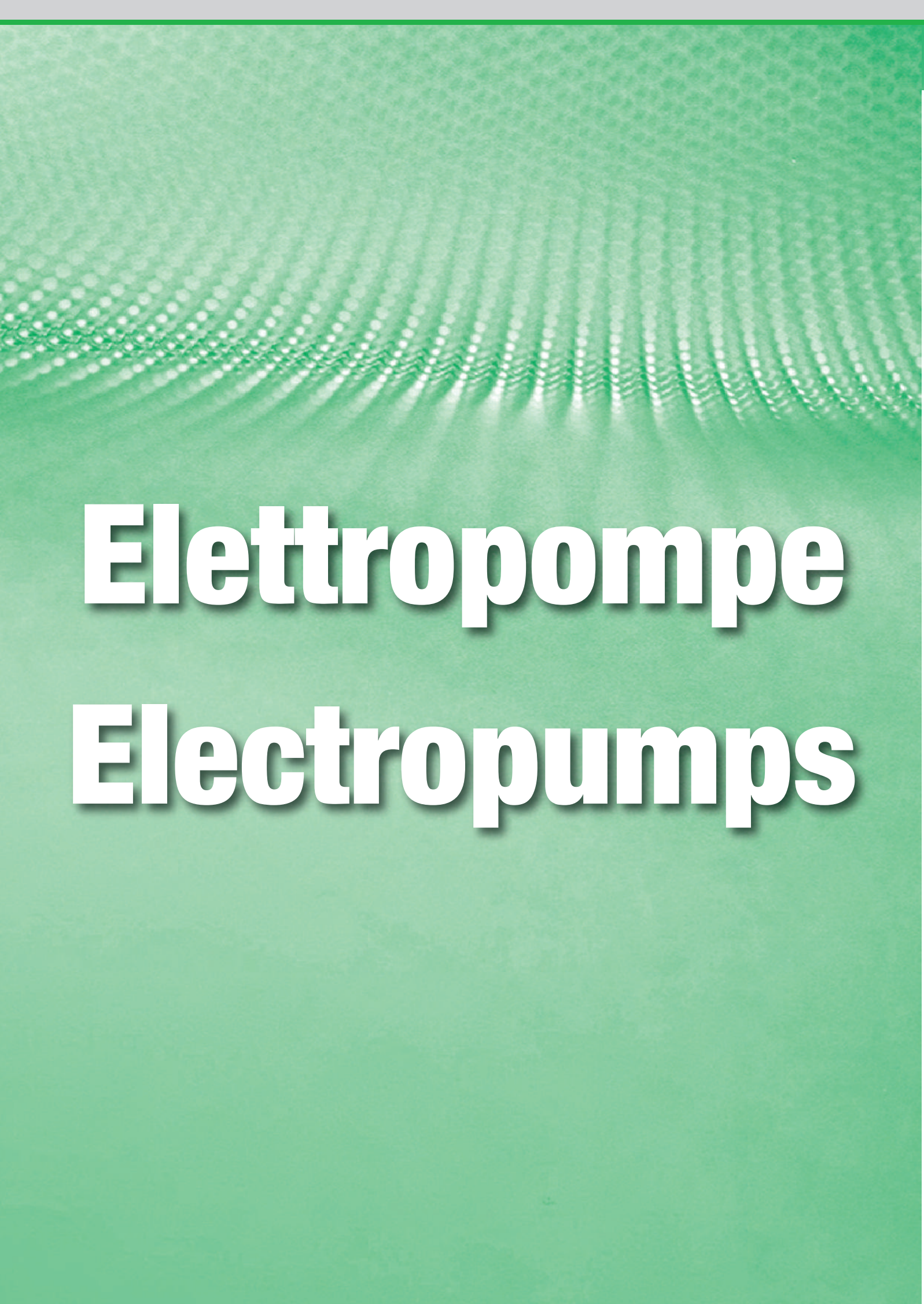
Venturi  
**code: SPA.H-0234-01**



Ugello per installazioni su grandi vasche idromassaggio o spas. Attacco Ø esterno 1".  
Air jet for large whirlpool or spas applications. Attachment external Ø 1".  
**code: SPA.H-0029-11**



' T ' ridotto Ø mm 32 x 1" x 32  
Reduced ' T ' Ø mm 32 x 1" x 32  
**code: SPA.H-2170-02**



# **Elettropompe**

# **Electropumps**

# ELETTROPOMPA PX 60 - PX80

Elettropompa centrifuga per vasche idromassaggio, costruita con materiali di alta qualità, motore con protezione IP X5. Protezione da sovraccarico a riarmo automatico incorporata. Motore chiuso con ventilazione esterna e cassa alettata in alluminio completa di raccordo diritto per aspirazione e raccordo ' T ' per mandata. Sistema autodrenante per evitare ristagni d'acqua.

Electropump centrifuged for whirlpool bath, made with top quality material, IP X5 protected motor, protection against overloading and automatic start up built in. Cased in motor with external ventilation, aluminium winged casing complete with straight aspiration fittings and ' T ' shaped fitting, self draining system to avoid backwater.



## Elettropompa per idromassaggio

completa di:

- raccordi da incollare
- 1 mt cavo di alimentazione

## Pump for hydro massage system

complete with:

- fitting to be glued
- 1 mt power cable

Ø40	PX60	code: HN600.04
Ø50	PX60	code: HN600.05
Ø40	PX80	code: HN610.04
Ø50	PX80	code: HN610.05

## Elettropompa PNEUMATICA per idromassaggio

completa di:

- raccordi da incollare
- 1 mt cavo di alimentazione
- interruttore pneumatico

## PNEUMATIC pump for hydro massage system

complete with:

- fitting to be glued
- 1 mt power cable
- air switch

Ø40	PX60	code: HPN600.04
Ø50	PX60	code: HPN600.05
Ø40	PX80	code: HPN610.04
Ø50	PX80	code: HPN610.05

## Elettropompa DIGITALE per idromassaggio

completa di:

- raccordi da incollare
- 1 mt cavo di alimentazione
- cavo e connettore per monocomando digitale
- sensore di livello

## DIGITAL pump for hydro massage system

complete with:

- fitting to be glued
- 1 mt power cable
- cable and connector for digital keypad control
- level sensor

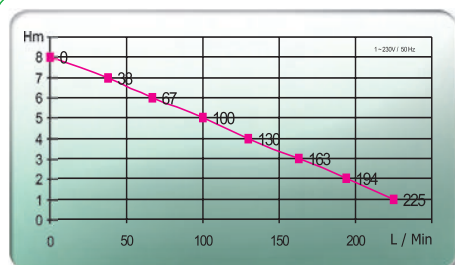
Ø40	PX60	code: HDG600.04
Ø50	PX60	code: HDG600.05
Ø40	PX80	code: HDG610.04
Ø50	PX80	code: HDG610.05



Giunto antivibrante per pompe

Silent block

code: 0097

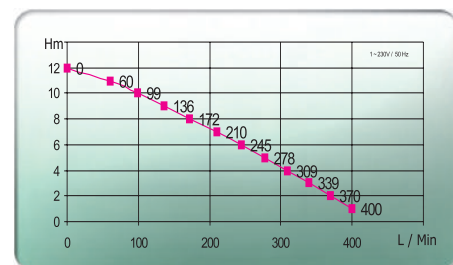


### PX60

max H 8,1m  
max l/min 250  
Amp. 2,5  
HP 0,71  
KW 0,53

### PX80

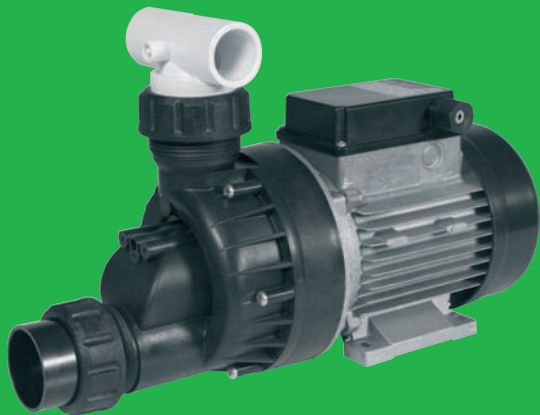
max H 9,5m  
max l/min 295  
Amp. 3,7  
HP 1,1  
KW 0,81



# ELETTROPOMPA PX120

Elettropompa centrifuga per vasche idromassaggio, costruita con materiali di alta qualità, motore con protezione IP X5. Protezione da sovraccarico a riarmo automatico incorporata. Motore chiuso con ventilazione esterna e cassa alettata in alluminio completa di raccordo diritto per aspirazione e raccordo 'T' per mandata. Sistema autodrenante per evitare ristagni d'acqua.

Electropump centrifuged for whirlpool bath, made with top quality material, IP X5 protected motor, against overloading and automatic start up built in. Cased in motor with external ventilation, aluminium winged casing complete with straight aspiration fittings and 'T' shaped fitting, self draining system to avoid backwater.



## Elettropompa per idromassaggio

completa di:

- raccordi da incollare
- 1 mt cavo di alimentazione

## Pump for hydro massage system

complete with:

- fitting to be glued
- 1 mt power cable

Ø40

code: HN620.04

Ø50

code: HN620.05

## Elettropompa PNEUMATICA per idromassaggio

completa di:

- raccordi da incollare
- 1 mt cavo di alimentazione
- interruttore pneumatico

## PNEUMATIC pump for hydro massage system

complete with:

- fitting to be glued
- 1 mt power cable
- air switch

Ø40

code: HPN620.04

Ø50

code: HPN620.05

## Elettropompa DIGITALE per idromassaggio

completa di:

- raccordi da incollare
- 1 mt cavo di alimentazione
- cavo e connettore per monocomando digitale
- sensore di livello

## DIGITAL pump for hydro massage system

complete with:

- fitting to be glued
- 1 mt power cable
- cable and connector for digital keypad control
- level sensor

Ø40

code: HDG620.04

Ø50

code: HDG620.05



Giunto antivibrante per pompe

Silent block

code: 0097

## PX120

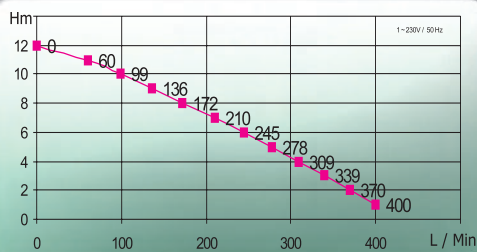
max H 12m

max l/min 420

Amp. 5,6

HP 1,5

KW 1,2



The background is a vibrant red color with a fine, pebbled texture. At the top of the image, there is a decorative wavy pattern consisting of multiple rows of small, light-colored dots that create a sense of depth and movement. The word "kit" is centered in the lower half of the image.

**kit**



# KIT 'BLOWER PN 450'



bianco  
cromo

white  
chrome

code: **HKO.PNQ.B**  
code: **HKO.PNQ.C**

## COMPONENTI - COMPONENTS

n° 1	Blower 450 PN	Blower 450 PN	<b>H307.PNQ</b>
n° 4	Antivibranti	Silent blocks	<b>0097</b>
n° 1	Tubo flessibile	Flexible hose	<b>H307.T</b>
n° 2	Fascette inox stringitubo	Hose clamps stainless steel	<b>0068</b>
n° 1	Collettore di sicurezza	Safety air collector	<b>H308.L</b>
n° 1	Pulsante pneumatico cromo	Pneumatic button	<b>H296.C</b>
n° 1	Valvola di ritegno	Non return valve	<b>H307.V</b>
n° 1	Collettore aria	Manifold	<b>H305-12</b>
n° 24	Mollette per fissaggio tubo	Spring for hose fixing	<b>H0028</b>
n° 12	Ugelli aria cromo, placca in ABS	Air jet, cover in ABS	<b>H334.NCH.C</b>

## ACCESSORI CONSIGLIATI

Tubo - hose Ø 7 x 10  
Tubo - hose Ø 3 x 5

code: **0033.710**  
code: **0082**



bianco      white      **code: HKO.PNR.B**  
 cromo      chrome      **code: HKO.PNR.C**

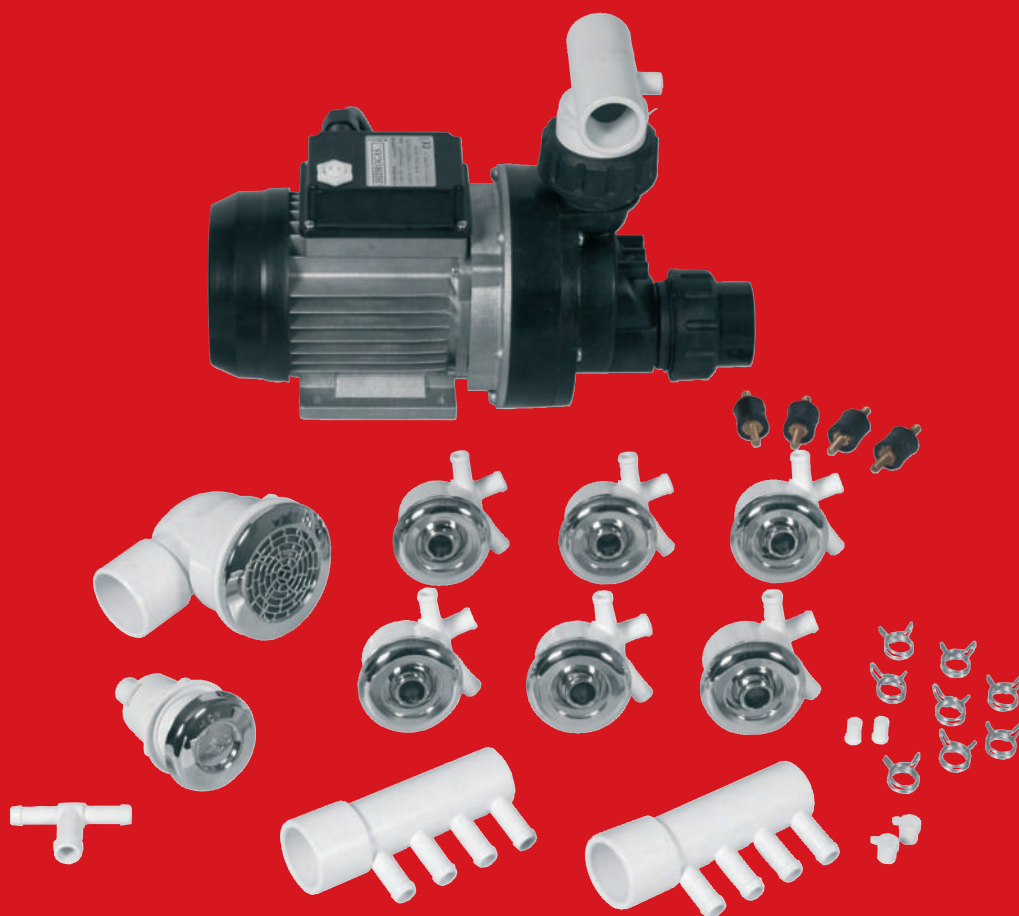
## COMPONENTI - COMPONENTS

n° 1	Blower 600 PN	Blower 600 PN	<b>H307.PNR</b>
n° 4	Antivibranti	Silent blocks	<b>0097</b>
n° 1	Tubo flessibile	Flexible hose	<b>H307.T</b>
n° 2	Fascette inox stringitubo	Hose clamps stainless steel	<b>0068</b>
n° 1	Collettore di sicurezza	Safety air collector	<b>H308.L</b>
n° 1	Pulsante pneumatico cromo	Pneumatic button	<b>H296.C</b>
n° 1	Valvola di ritegno	Non return valve	<b>H307.V</b>
n° 1	Collettore aria	Manifold	<b>H305-20</b>
n° 40	Mollette per fissaggio tubo	Spring for hose fixing	<b>H0028</b>
n° 20	Ugelli aria cromo, placca in ABS	Air jet, cover in ABS	<b>H334.NCH.C</b>

## ACCESSORI CONSIGLIATI

Tubo - hose Ø 7 x 10      **code: 0033.710**  
 Tubo - hose Ø 3 x 5      **code: 0082**

# KIT 'E - 60'



bianco  
cromo

white  
chrome

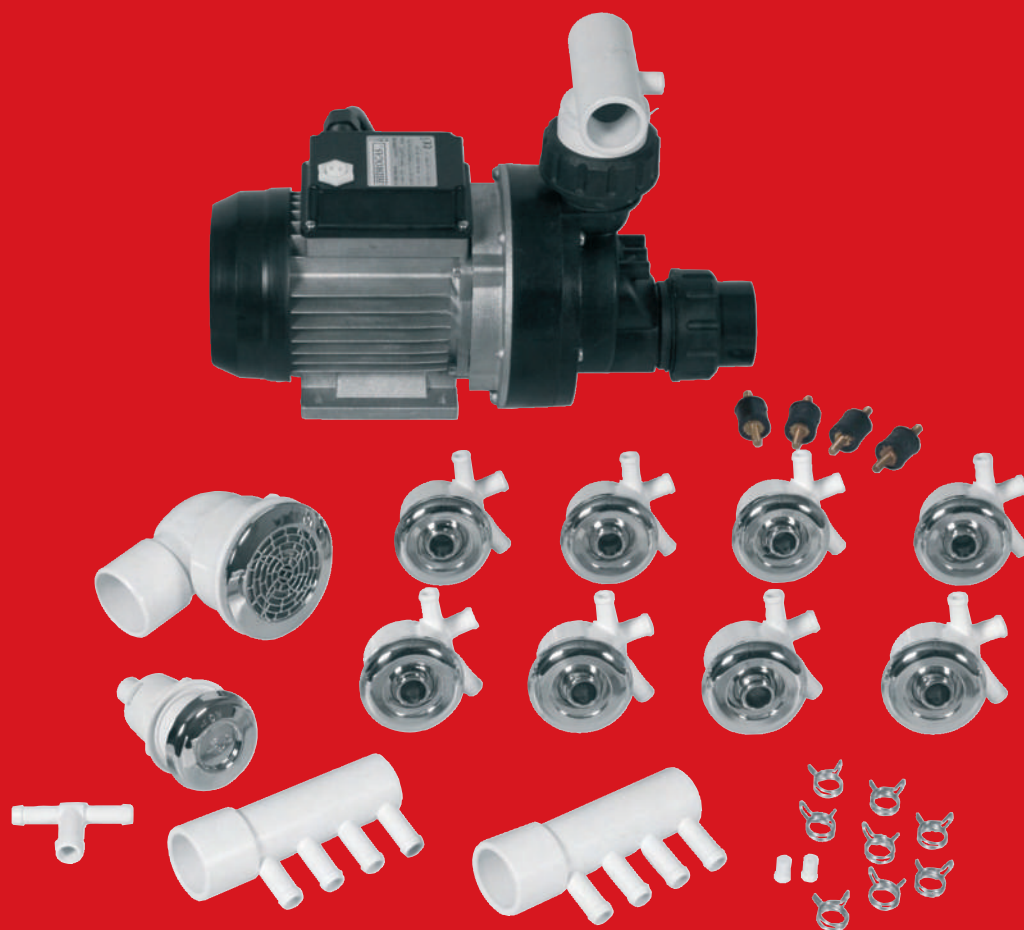
code: HKE6.PN6.B  
code: HKE6.PN6.C

## COMPONENTI - COMPONENTS

n° 1	Elettropompa PX60 PN	Electropump PX60 PN	HPN600.04
n° 4	Antivibranti	Silent blocks	0097
n° 1	Monocomando pneumatico	Pn push on/off and air control	HM2.PN.TC
n° 1	' T ' Ø 10 x 16 x 10	' T ' Ø 10 x 16 x 10	H00.78
n° 1	Aspirazione cromo	Suction chrome	H500.4C
n° 6	Bocchette tipo ' E ' cromo cromo	Jet type ' E ' chrome chrome	450.CC
n° 2	Collettori	Manifold	H454
n° 12	Mollette per tubo acqua	Springs for water system	0079
n° 13	Mollette per tubo aria	Springs for air system	0076

## ACCESSORI CONSIGLIATI

Tubo - hose Ø 10 x 16      code: 0066  
Tubo - hose Ø 12 x 18      code: 0086  
Tubo - hose Ø 3 x 5        code: 0082



bianco	white	<b>code: HKE8.PN8.B</b>
cromo	chrome	<b>code: HKE8.PN8.C</b>

### COMPONENTI - COMPONENTS

n° 1	Elettropompa PX80 PN	Electropump PX80 PN	<b>HPN610.04</b>
n° 4	Antivibranti	Silent blocks	<b>0097</b>
n° 1	Monocomando pneumatico	Pn push on/off and air control	<b>HM2.PN.TC</b>
n° 1	' T ' Ø 10 x 16 x 10	' T ' Ø 10 x 16 x 10	<b>H00.78</b>
n° 1	Aspirazione cromo	Suction chrome	<b>H500.4C</b>
n° 8	Bocchette tipo ' E ' cromo cromo	Jet type ' E ' chrome chrome	<b>450.CC</b>
n° 2	Collettori	Manifold	<b>H454</b>
n° 16	Mollette per tubo acqua	Springs for water system	<b>0079</b>
n° 17	Mollette per tubo aria	Springs for air system	<b>0076</b>

### ACCESSORI CONSIGLIATI

Tubo - hose Ø 10 x 16	<b>code: 0066</b>
Tubo - hose Ø 12 x 18	<b>code: 0086</b>
Tubo - hose Ø 3 x 5	<b>code: 0082</b>

# KIT 'MONO DG 60'



## BABY

bianco white  
cromo chrome

code: HKMDG.BB6  
code: HKMDG.BCC6

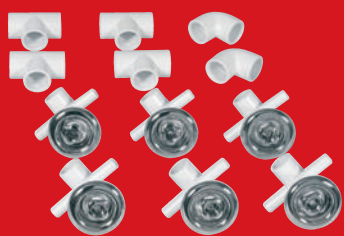
## MINOR

bianco white  
cromo chrome

code: HKMDG.MB6  
code: HKMDG.MCC6

## COMPONENTI - COMPONENTS

n° 1	Elettropompa PX60 DG	Electropump PX60 DG	<b>HDG600.04</b>
n° 4	Antivibranti	Silent blocks	<b>0097</b>
n° 1	Monocomando digitale	Digital on/off and air control	<b>HM2.DG.TC</b>
n° 1	' T ' Ø 16	' T ' Ø 16	<b>H00.47</b>
n° 1	Aspirazione cromo	Suction chrome	<b>H500.4C</b>



n° 6	Bocchetta tipo BABY cromo cromo	Jet type BABY chrome chrome	<b>H600.CC</b>
n° 4	' T ' Ø 32mm	' T ' Ø 32mm	<b>0053PVC.B</b>
n° 2	Gomiti Ø 32mm	Elbow Ø 32mm	<b>0054PVC.B</b>



n° 6	Bocchetta tipo MINOR cromo cromo	Jet type MINOR chrome chrome	<b>H650.CC</b>
------	----------------------------------	------------------------------	----------------

## ACCESSORI CONSIGLIATI

Tubo - hose Ø 15 x 21	<b>code: 0033.1521</b>
Tubo - hose Ø 32mm	<b>code: 0032.532</b>
Tubo - hose Ø 40mm	<b>code: 0032.540</b>



## BABY

bianco

white

code: HKMDG.BB8

cromo

chrome

code: HKMDG.BCC8

## MINOR

bianco

white

code: HKMDG.MB8

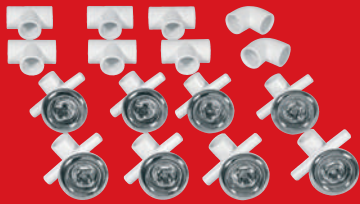
cromo

chrome

code: HKMDG.MCC8

## COMPONENTI - COMPONENTS

n° 1	Elettropompa PX80 DG	Electropump PX80 DG	<b>HDG610.04</b>
n° 4	Antivibranti	Silent blocks	<b>0097</b>
n° 1	Monocomando digitale	Digital on/off and air control	<b>HM2.DG.TC</b>
n° 1	' T ' Ø 16	' T ' Ø 16	<b>H0047</b>
n° 1	Aspirazione cromo	Suction chrome	<b>H500.4C</b>



n° 8	Bocchetta tipo BABY cromo cromo	Jet type BABY chrome chrome	<b>H600.CC</b>
n° 6	' T ' Ø 32mm	' T ' Ø 32mm	<b>0053PVC.B</b>
n° 2	Gomiti Ø 32mm	Elbow Ø 32mm	<b>0054PVC.B</b>

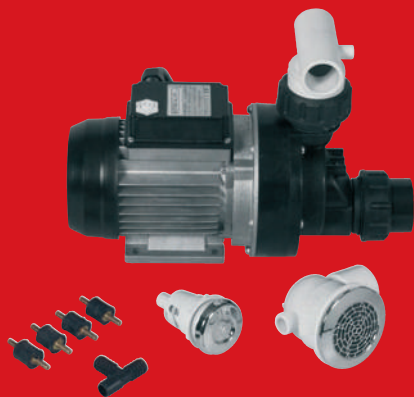


n° 8	Bocchetta tipo MINOR cromo cromo	Jet type MINOR chrome chrome	<b>H650.CC</b>
------	----------------------------------	------------------------------	----------------

## ACCESSORI CONSIGLIATI

Tubo - hose Ø 15 x 21	<b>code: 0033.1521</b>
Tubo - hose Ø 32mm	<b>code: 0032.532</b>
Tubo - hose Ø 40mm	<b>code: 0032.540</b>

# KIT 'MONO PN 60'



## BABY

bianco

white

code: HKMPN.BB

cromo

chrome

code: HKMPN.BCC

## MINOR

bianco

white

code: HKMPN.MB

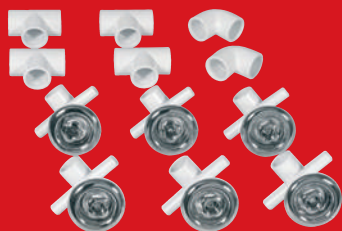
cromo

chrome

code: HKMPN.MCC

## COMPONENTI - COMPONENTS

n° 1	Elettropompa PX60 PN	Electropump PX60 PN	<b>HPN600.04</b>
n° 4	Antivibranti	Silent blocks	<b>0097</b>
n° 1	Monocomando pneumatico	Pn push on/off and air control	<b>HM2.PN.TC</b>
n° 1	' T ' Ø 16	' T ' Ø 16	<b>H0047</b>
n° 1	Aspirazione cromo	Suction chrome	<b>H500.4C</b>



n° 6	Bocchetta tipo BABY cromo cromo	Jet type BABY chrome chrome	<b>H600.CC</b>
n° 4	' T ' Ø 32mm	' T ' Ø 32mm	<b>0053PVC.B</b>
n° 2	Gomiti Ø 32mm	Elbow Ø 32mm	<b>0054PVC.B</b>



n° 6	Bocchetta tipo MINOR cromo cromo	Jet type MINOR chrome chrome	<b>H650.CC</b>
------	----------------------------------	------------------------------	----------------

## ACCESSORI CONSIGLIATI

Tubo - hose Ø 15 x 21	<b>code: 0033.1521</b>
Tubo - hose Ø 3 x 5	<b>code: 0082</b>
Tubo - hose Ø 32mm	<b>code: 0032.532</b>
Tubo - hose Ø 40mm	<b>code: 0032.540</b>



## BABY

bianco

white

code: HKMPN.BB8

cromo

chrome

code: HKMPN.BCC8

## MINOR

bianco

white

code: HKMPN.MB8

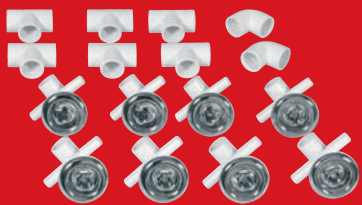
cromo

chrome

code: HKMPN.MCC8

## COMPONENTI - COMPONENTS

n° 1	Elettropompa PX80 DG	Electropump PX80 DG	<b>HDG610.04</b>
n° 4	Antivibranti	Silent blocks	<b>0097</b>
n° 1	Monocomando digitale	Digital on/off and air control	<b>HM2.DG.TC</b>
n° 1	' T ' Ø 16	' T ' Ø 16	<b>H0047</b>
n° 1	Aspirazione cromo	Suction chrome	<b>H500.4C</b>



n° 8	Bocchetta tipo BABY cromo cromo	Jet type BABY chrome chrome	<b>H600.CC</b>
n° 6	' T ' Ø 32mm	' T ' Ø 32mm	<b>0053PVC.B</b>
n° 2	Gomiti Ø 32mm	Elbow Ø 32mm	<b>0054PVC.B</b>



n° 8	Bocchetta tipo MINOR cromo cromo	Jet type MINOR chrome chrome	<b>H650.CC</b>
------	----------------------------------	------------------------------	----------------

## ACCESSORI CONSIGLIATI

Tubo - hose Ø 15 x 21	<b>code: 0033.1521</b>
Tubo - hose Ø 3 x 5	<b>code: 0082</b>
Tubo - hose Ø 32mm	<b>code: 0032.532</b>
Tubo - hose Ø 40mm	<b>code: 0032.540</b>



# KIT 'TRIO DG 80'



bianco white code: **HK3DG.B8**  
 cromo chrome code: **HK3DG.C8**

## COMPONENTI - COMPONENTS

n° 1	Elettropompa PX80	Electropump PX80	<b>HN610.04</b>
n° 4	Antivibranti	Silent blocks	<b>0097</b>
n° 1	Aspirazione cromo	Suction chrome	<b>H500.4C</b>
n° 6	Bocchette tipo ' Z ' cromo	Jet type ' Z ' chrome	<b>H301.ZC</b>
n° 4	' T ' Ø 32 x 40 x 32	' T ' Ø 32 x 40 x 32	<b>0050</b>
n° 2	Gomito Ø 40	Elbow Ø 40	<b>0025.PVC</b>
n° 1	Regolatore cromo	Air control	<b>H460.TC</b>
n° 1	' T ' Ø 16mm	' T ' Ø 16mm	<b>H0047</b>
n° 1	Brominator	Brominator	<b>306.0</b>
n° 1	Centralina completa di tastiera e sensore di livello	Control box complete with keyboard and level sensor	<b>DGS.C02</b>
n° 1	Faro cromo	Spot light chrome	<b>311.F-54.C</b>
n° 1	Blower VOVO 450W	Blower VOVO 450W	<b>H307.Q</b>
n° 4	Antivibranti	Silent block	<b>0097</b>
n° 1	Looping	Looping	<b>H308.L</b>
n° 1	Tubo flessibile per blower	Flexible hose for blower	<b>H307.T</b>
n° 1	Valvola di ritegno	Non return valve	<b>H307.V</b>
n° 12	Ugelli cromo	Air jet	<b>H335.NCH.C</b>
n° 1	Collettore	Manifold	<b>H305-12</b>
n° 24	Molle	Spring	<b>H0028</b>

## ACCESSORI CONSIGLIATI

Tubo - hose Ø 32mm code: **0032.532**  
 Tubo - hose Ø 40mm code: **0032.540**  
 Tubo - hose Ø 7 x 10 code: **0033.710**  
 Tubo - hose Ø 3 x 5 code: **0082**  
 Tubo - hose Ø 15 x 21 code: **0033.1521**



bianco white code: **HK3DG.BB**  
 cromo chrome code: **HK3DG.CC**

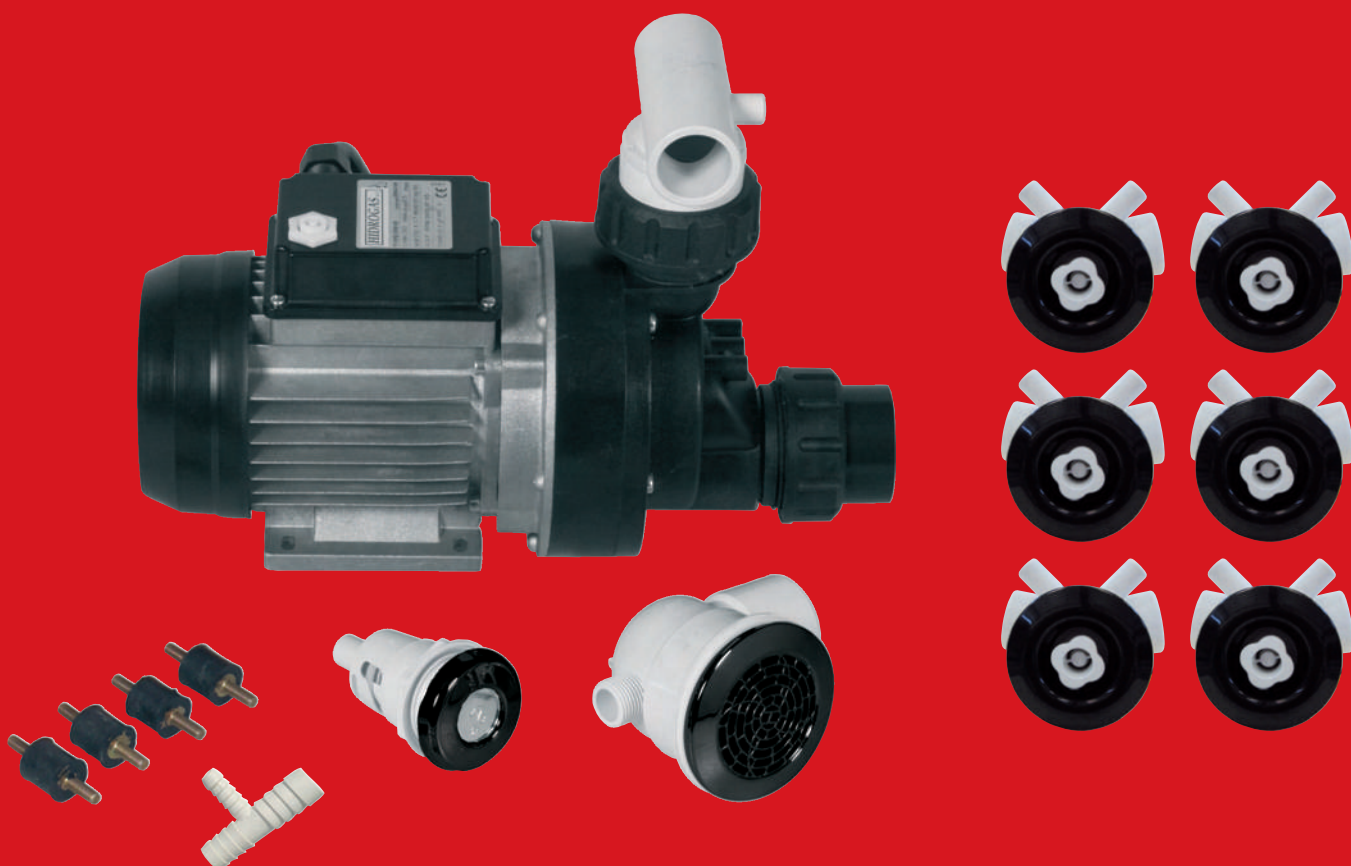
## COMPONENTI - COMPONENTS

n° 1	Elettropompa PX120	Electropump PX120	<b>HN620.04</b>
n° 4	Antivibranti	Silent blocks	<b>0097</b>
n° 1	Aspirazione cromo	Suction chrome	<b>H500.4C</b>
n° 8	Bocchette tipo ' Z ' cromo	Jet type ' Z ' chrome	<b>H301.ZC</b>
n° 6	' T ' Ø 32 x 40 x 32	' T ' Ø 32 x 40 x 32	<b>0050</b>
n° 2	Gomito ø 40	Elbow ø 40	<b>0025.PVC</b>
n° 1	Regolatore cromo	Air control	<b>H460.TC</b>
n° 1	' T ' Ø 16mm	' T ' Ø 16mm	<b>H0047</b>
n° 1	Brominator	Brominator	<b>306.0</b>
n° 1	Centralina completa di tastiera e sensore di livello	Control box complete with keyboard and level sensor	<b>DGS.C02</b>
n° 1	Faro cromo	Spot light chrome	<b>311.F-54.C</b>
n° 1	Blower VOVO 600W	Blower VOVO 600W	<b>H307.R</b>
n° 4	Antivibranti	Silent block	<b>0097</b>
n° 1	Looping	Looping	<b>H308.L</b>
n° 1	Tubo flessibile per blower	Flexible hose for blower	<b>H307.T</b>
n° 1	Valvola di ritegno	Non return valve	<b>H307.V</b>
n° 20	Ugelli cromo	Air jet	<b>H335.NCH.C</b>
n° 1	Collettore	Manifold	<b>H305-20</b>
n° 40	Molle	Spring	<b>H0028</b>

## ACCESSORI CONSIGLIATI

Tubo - hose Ø 32mm code: **0032.532**  
 Tubo - hose Ø 40mm code: **0032.540**  
 Tubo - hose Ø 7 x 10 code: **0033.710**  
 Tubo - hose Ø 3 x 5 code: **0082**  
 Tubo - hose Ø 15 x 21 code: **0033.1521**

# KIT "BLACK PN 60"



## COMPONENTI - COMPONENTS

n° 1	Elettropompa PX60 PN	Electropump PX60 PN	<b>HPN600.04</b>
n° 4	Antivibranti	Silent blocks	<b>0097</b>
n° 1	Monocomando pneumatico nero	Pn push on/off and air control black	<b>HM2.PN.CK</b>
n° 1	' T ' Ø 16	' T ' Ø 16	<b>H0047</b>
n° 1	Aspirazione Security nero	Suction Security black	<b>H500.4K</b>
n° 6	Bocchette tipo ' V ' nero	Jet type ' V ' black	<b>620.K</b>

## ACCESSORI CONSIGLIATI

Tubo - hose ø 15 x 21	<b>code: 0033.1521</b>
Tubo - hose ø 32 mm	<b>code: 0032.532</b>
Tubo - hose ø 3 x 5	<b>code: 0082</b>
Tubo - hose ø 40 mm	<b>code: 0032.540</b>

# CONDIZIONI GENERALI DI VENDITA

Con il riferimento dell'ordine il Cliente accetta pienamente e tacitamente tutte le nostre condizioni di vendita e di consegna sottostanti:

## PREZZI

I prezzi indicati nel nostro listino si intendono al netto dell'IVA e del trasporto.

I prezzi indicati nel nostro listino si intendono per merce resa franco nostro stabilimento di Mestrino.

I prezzi indicati nel nostro listino sono soggetti a variazioni e non sono impegnativi.

## PAGAMENTI

Tutti i pagamenti devono essere effettuati anticipatamente o secondo le modalità indicate nella fattura.

Tutti i pagamenti devono essere effettuati presso la nostra sede.

La ditta si riserva il diritto di sospendere le consegne o annullare gli ordini in corso qualora i pagamenti di consegne precedenti non siano regolari.

Il ritardato pagamento delle forniture darà luogo all'addebito degli interessi bancari.

Contestazioni di qualsiasi natura non danno alcun diritto a ritardare o a non effettuare il pagamento.

## RISERVATO DOMINIO

Gli articoli forniti rimangono di proprietà della HIDROGAS fino al loro completo pagamento.

## SPEDIZIONI

La merce viaggia a rischio e pericolo del Committente, anche se la spedizione è effettuata in porto franco.

La responsabilità della HIDROGAS cessa in ogni caso con la consegna al vettore, restano quindi a carico del committente le eventuali avarie o ammanchi durante il trasporto così come il diritto di rivalersi sul trasportatore per i danni subiti.

## IMBALLI

Gli imballi sono gratuiti salvo diversamente concordato. La HIDROGAS si riserva il diritto di cambiare in ogni momento il tipo d'imballo senza obbligo di preavviso alcuno al committente.

## TERMINI DI CONSEGNA

I termini di consegna che la HIDROGAS indicherà nell'eventuale conferma d'ordine, sono da ritenersi indicativi e non impegnativi. Non si accetterà pertanto la richiesta d'eventuali danni che il Committente abbia a reclamare per ritardata consegna.

## RESI

Tutti i possibili resi devono essere preventivamente concordati con autorizzazione scritta dal nostro ufficio commerciale e in porto franco, quindi non verranno accettati resi non preventivamente concordati.

## GARANZIA

La merce venduta da HIDROGAS è garantita per 12 mesi dalla data di acquisto.

Per difetti di materiale, costruzione o lavorazione a lei imputabili, per garanzia si intende la sola sostituzione o riparazione dei pezzi difettosi e viene esclusa qualsiasi altra responsabilità, indennizzo o risarcimento danni, anche verso terzi causati dall'impiego dei prodotti HIDROGAS.

E' esclusa ogni responsabilità per modifiche, manipolazioni o errata installazione dei pezzi.

Non sono coperte da garanzia le rifiniture cromate o dorate e le parti elettriche usurabili.

## RECLAMI

Non si accettano reclami dopo otto giorni dal ricevimento della merce che, trascorso tale termine si intende definitivamente accettata e regolare.

Per qualsiasi contestazione il foro competente sarà solo quello di Padova.

L'eventuale risarcimento di qualsiasi danno al compratore non potrà essere comunque valutato oltre il prezzo di fattura dell'articolo contestato, fatta riserva per eventuale dolo o colpa del venditore.

## MODIFICHE

L' HIDROGAS si riserva il diritto di approvare, senza alcun preavviso, le modifiche che si rendano tecnicamente necessarie al miglioramento dei prodotti.

# SALE CONDITIONS

Upon placement of the order, the Client fully and tacitly accepts all our sales and delivery terms here below:

## PRICES

Prices indicated in our price list are net excluding IVA and transport costs.

Prices indicated in our price list are quoted Ex-works from our premises in Mestrino.

Prices indicated in our price list are subject to variations without prior notice.

## PAYMENTS

All payments must be paid in advance or as indicated in the relative Invoice.

The payments should be remitted to our offices.

We reserve the right to suspend or cancel despatches if any previous payments are outstanding.

Late payments will be debited with bank interest.

Complaints of any nature do not give the right to delay or not remit the payments due.

## RIGHTS RESERVED

All articles supplied by Hidrogas are of their property until full payment of the goods has been effected.

## DESPATCHES

Goods travel at the customer's own risk and danger, even if supplied at Ex-works conditions.

The responsibility of Hidrogas in any case ends with the delivery to carrier, so any damage or discrepancies during transport should be claimed back from the carrier.

## PACKAGING

Packaging is free of charge except if agreed otherwise. HDROGAS reserve the right to change the type of packaging without prior notice to the customer.

## TERMS OF DELIVERY

The delivery terms indicated by Hidrogas in the relative order should be considered only an indication and not withholding. Therefore, any requests for eventual damage claimed by the customer for late deliveries will not be accepted.

## RETURNING GOODS

All goods to be returned must be previously agreed upon beforehand and with written authorization from our offices, the goods must be returned at the customer expense. Non returns which have not been previously agreed will not be accepted.

## GUARANTY

The goods sold by Hidrogas are guaranteed for 12 months from the date of invoice. For fault of material, production or assembly, the guaranty covers ONLY the replacement or reparation of the supplied goods; all other responsibility will be declined, any claim of damages to third parties caused by the use of Hidrogas products will be refused. This excludes our responsibility for any incorrect use or tampering of Hidrogas products. The guaranty does not cover any chrome, gold plated, electrical parts due to use throughout time.

## COMPLAINTS

No complaint will be accepted eight days after receipt of the goods, hereafter, this period of time, the delivery of the mentioned goods will be considered regular and accepted. For any legal dispute, the chosen Court of Padova will have full competence only. Any eventual claim for damages requested by the buyer will not be evaluated any higher than the invoiced price of the article, with the exception of any eventual fraud or blame on the seller's part.

## MODIFICATIONS

HIDROGAS reserve the right to approve, without prior warning, any technical modifications which might be required.

Hidrogas

Via Levico 35/i - 35035 Mestrino (Pd) Italy

Tel.: +39 049 900 51 74 • Fax: +39 049 900 57 96

[info@hidrogas.it](mailto:info@hidrogas.it)

[www.hidrogas.it](http://www.hidrogas.it)

# FILTRO A CARTUCCIA

## CARTRIDGE FILTER



Dimensioni / Dimensions:

Alto / Height 46 cm

Largo / Width 40 cm

Profondo / Depth 20 cm

Attacchi ad incollaggio / Unions Ø50mm

**CODE: SPA.H-0114-12**

# PUMP PX200

Per sistemi idromassaggio o nuoto contro corrente in piscine.

Temperatura acqua max. 60°C

Valore pH dell'acqua 3-10

Pressione massima d'esercizio 3 bar.

Corpo pompa con filetti gas per raccordi commerciali.

For hydromassage or counter swimming plants on swimming pools.

Max water temperature 60°C

Water pH value 3-10

Exercise pressure max 3bar



max. Hm 16,5

max. L/Min 770

max. m<sup>3</sup>/h 46,2

~1 Amp. 10,5

~3 Amp. 9,8-3,5

HP 2,96

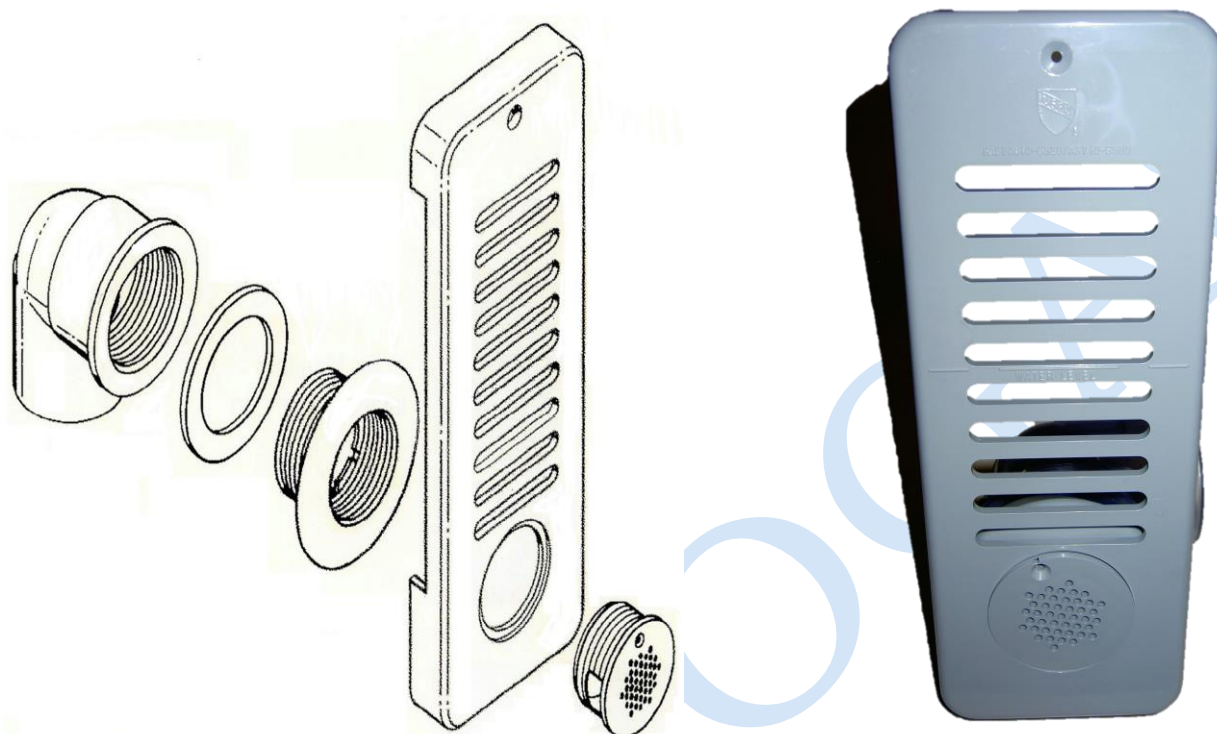
Kw 2,2

CODE : HN640.20





# SKIMMER



Dimensioni / Dimensions:

Alto / Height 265 mm

Attacchi ad incollaggio / Unions Ø50mm

**CODE: 9056-01GR**